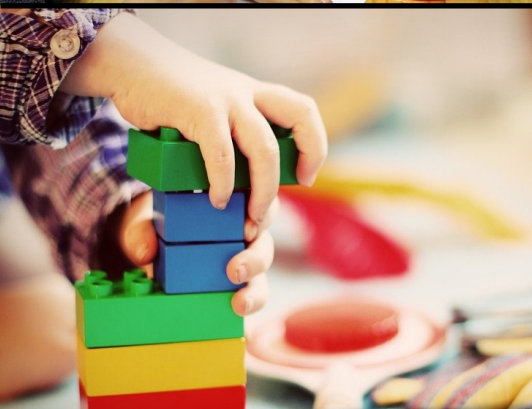




4 Year Old Traditional Tuition Preschool Program



4-year-old preschool classes are designed to foster each child's imagination, creativity and excitement for learning. Children learn through direct, active, hands-on learning experiences that facilitate each child's overall development and readiness skills. Children are encouraged to experiment, problem solve, and take an active initiative in their learning environment.

Children will practice recognizing and writing their names, learning to recognize and identify the letters of the alphabet as well as the beginning sounds each letter makes. They will practice recognizing and writing their names, identifying letters and sounds, counting, art, music, and other daily activities that are designed to challenge and meet the children's interest.

Preschool provides a strong, solid foundation for success in school. Through ongoing observation and assessment, the teacher's goal is to assure that each child is on target in acquiring the skills needed to be successful in kindergarten.

Program Details:

- Child should be 4 on or before September 1st of the current school year.
- Classes are held 5 days per week for 3 hours per class.
- There is a non-refundable & non-transferable registration fee and monthly tuition is due the first day of class each month.
- Snacks are provided by the program and parent donations.
- Maximum class size is 18.
- Parent Involvement includes two parent-teacher conferences, classroom activities, volunteering, and field trips.
- This preschool program follows the Creative Curriculum, Quality Standards for Early Childhood Education Pre-Kindergarten.

LOCATION

Anchor Bay Early Childhood Center
52680 Washington; New Baltimore

REGISTRATION

For additional information or class availability, call 586-716-7862 or visit www.anchorbay.misd.net/schools/early-childhood-center/

WHAT IF I LIVE OUTSIDE OF THE DISTRICT?

Families that live outside of Anchor Bay School District are welcome to apply.

Anchor Bay School District
www.anchorbay.misd.net

This program is a self-supporting program of the Anchor Bay School District. Anchor Bay School District does not exclude any qualified person from its Early Childhood Programs on the basis of disability.