



Ashley Elementary

BOND PROGRAM UPDATE

TUESDAY • APRIL 16, 2024



SECURITY UPDATES

COMPLETED

projects



- ✓ Upgrades access control
- ✓ Staff IDs
- ✓ Door prop alert systems
- ✓ Increased lockdown button access
- ✓ New exterior door locks
- ✓ Risk & vulnerability assessment
- ✓ Dedicated safety team
- ✓ Partnership with local law enforcement

IN PROGRESS & FUTURE

projects



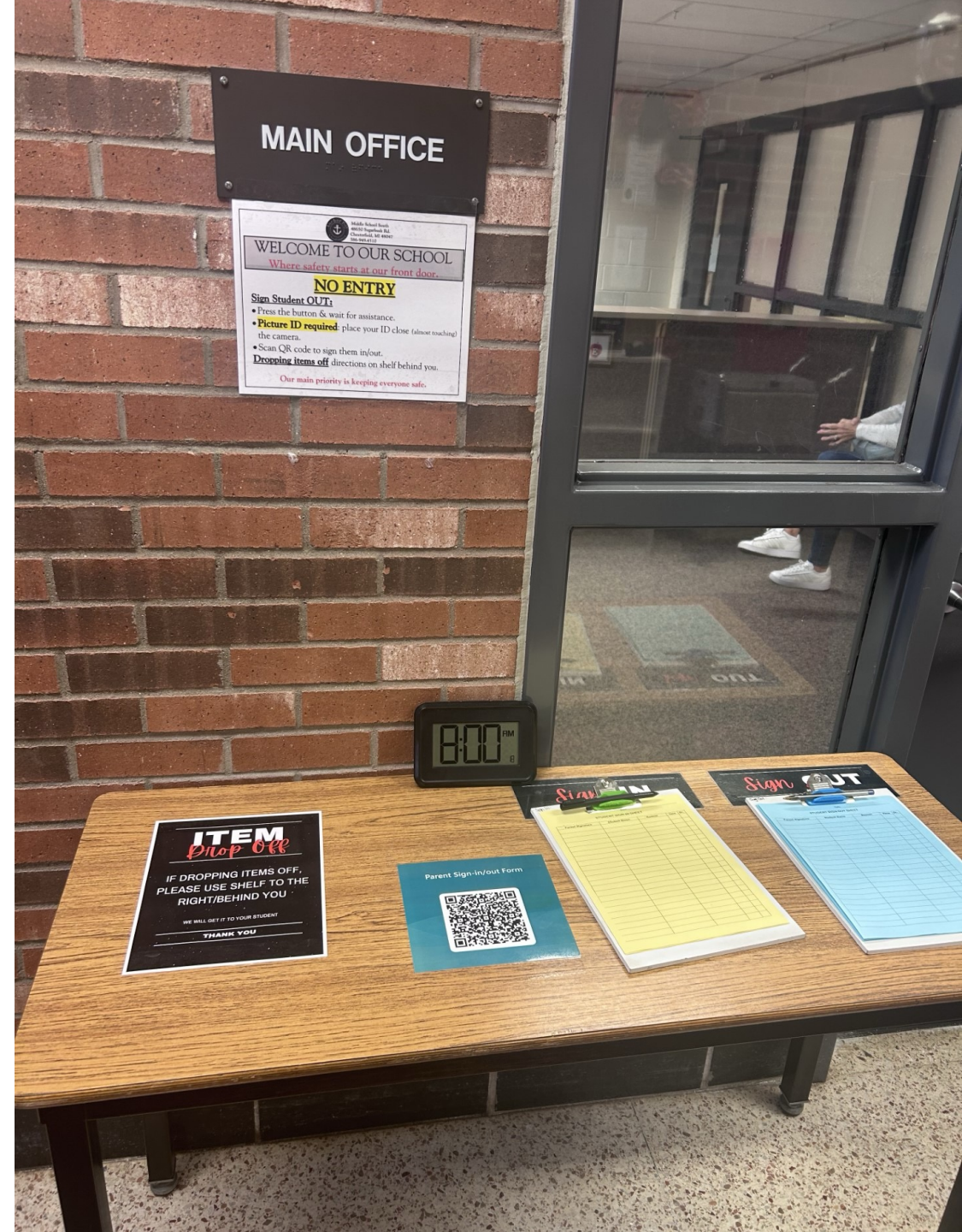
- ✓ **Radios** - *in progress*
- ✓ **Cameras** - *in progress*
- ✓ **Threat assessment procedures** - *in progress*
- ✓ **Active intruder response training** - *in progress*
- ✓ **Emergency reunification procedures**
- ✓ **School emergency / crisis team**
- ✓ **Weapon detection technology**
- ✓ **Bullet resistant window film**

Safety

STARTS AT THE FRONT DOOR

UPGRADES & SECURITY ENHANCEMENTS

Secure vestibule
Visitor management



DAILY & EMERGENCY OPERATIONS SOLUTION



DISMISSAL MANAGEMENT

- Reduce time spent on dismissal
- Eliminate front office calls
- Make instant dismissal changes
- Ensure student safety every day
- Communicate in real time
- Increase instructional time



EMERGENCY ALERT SYSTEM

- Equip staff with a silent panic button
- Account for every student's safety
- Send staff customized protocols
- Signal emergency responders quickly
- Utilize a system everyone uses daily
- Communicate in real time with staff & parents



EMERGENCY REUNIFICATION TOOL

- Initiate reunification on any device
- Easily communicate with staff & parents
- Check in guardians securely
- Mark students dismissed when reunited
- Use a process familiar with everyone
- Eliminate inefficient paper reunification



DIGITAL HALL PASSES

- Create timestamped digital hall passes
- Give hall monitors a real-time view
- Account for students during emergencies
- Limit passes to mitigate student behavior
- Access reports to make informed decisions
- Gain insights to serve students better



PROGRAMMING UPDATES

NEW CAREER PATHWAY TRACKS

A new day in the Bay!



**ENGINEERING,
MANUFACTURING,
NATURAL SCIENCE
& AGRICULTURE**



**HEALTH & HUMAN
SERVICES**



**ARTS &
COMMUNICATION**



**BUSINESS &
TECHNOLOGY**



CONSTRUCTION UPDATES

COMPLETED PROJECTS • DISTRICT WIDE ACCESS CONTROLS



More than 75 card readers installed



More than 300 Door Contacts Installed

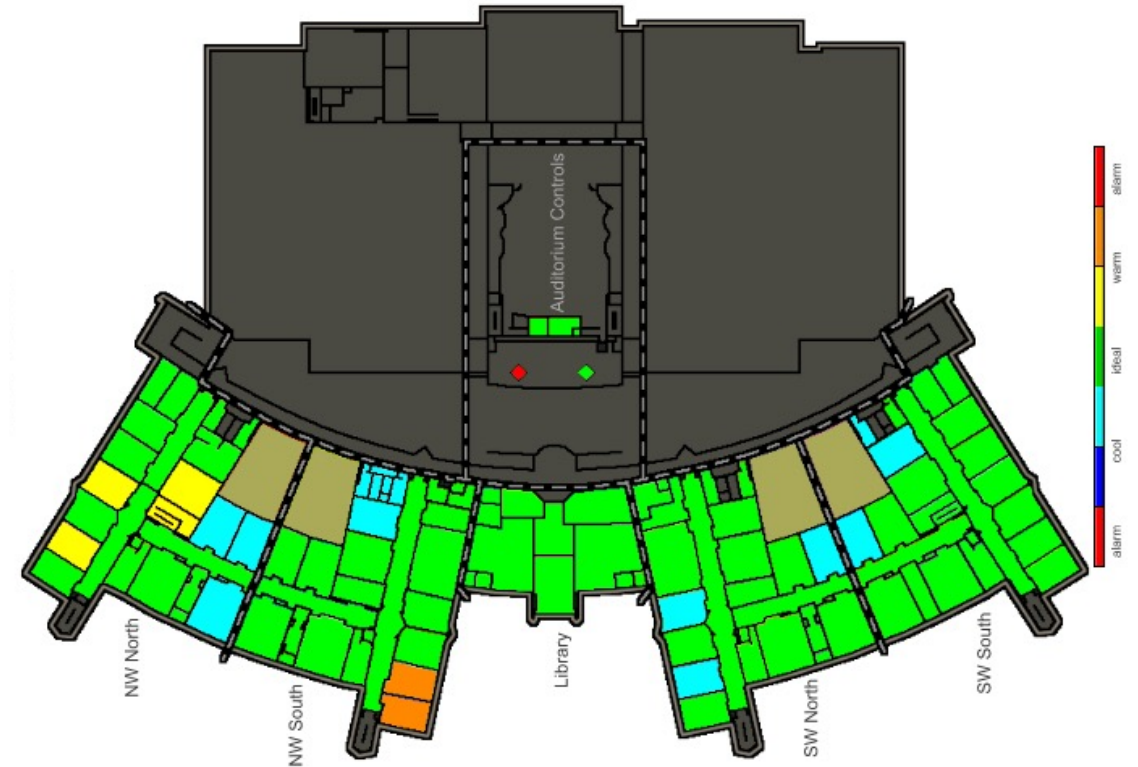
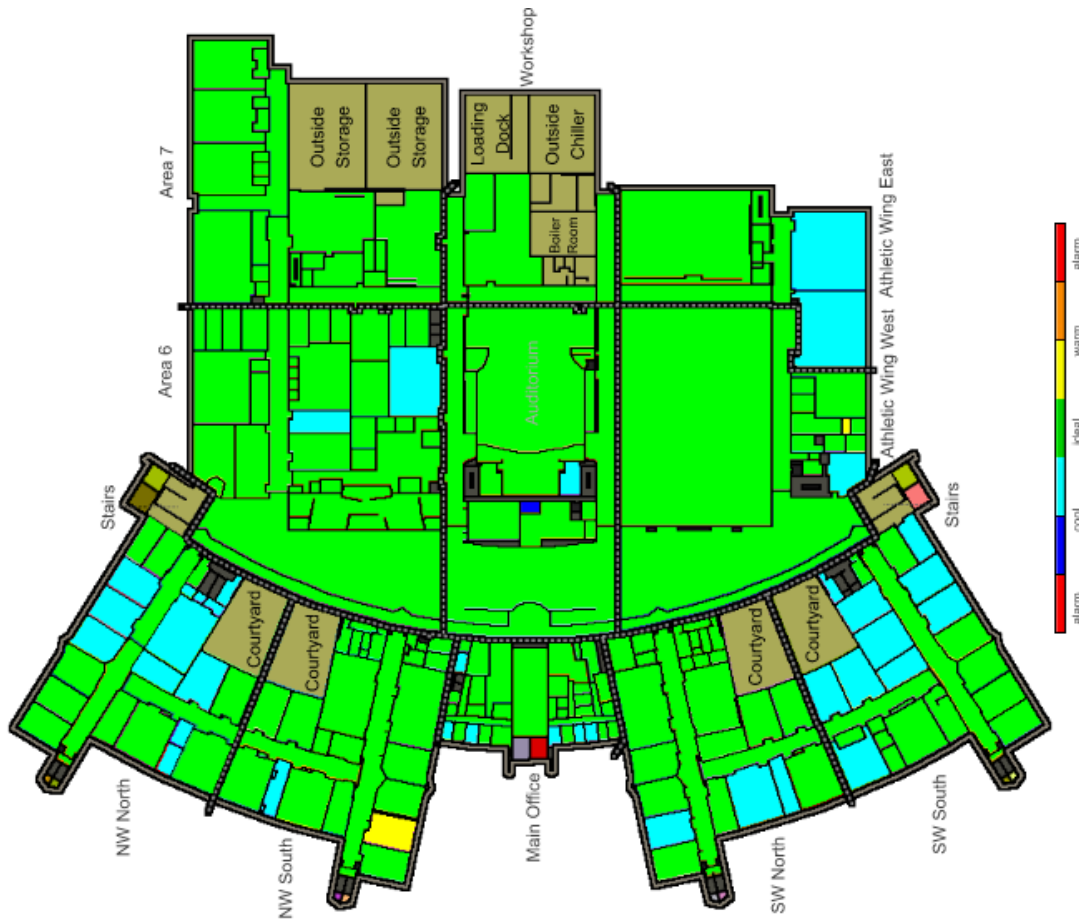


Exterior Door Key Replacement



All 14 Buildings in District

COMPLETED PROJECTS • HS TEMPERATURE CONTROLS



MORE THAN 250 PIECES OF EQUIPMENT HAVE BEEN ADDED TO BMS SYSTEM

COMPLETED PROJECTS • HS GYM FLOOR & SCORE BOARDS



COMPLETED PROJECTS • STORAGE FACILITY

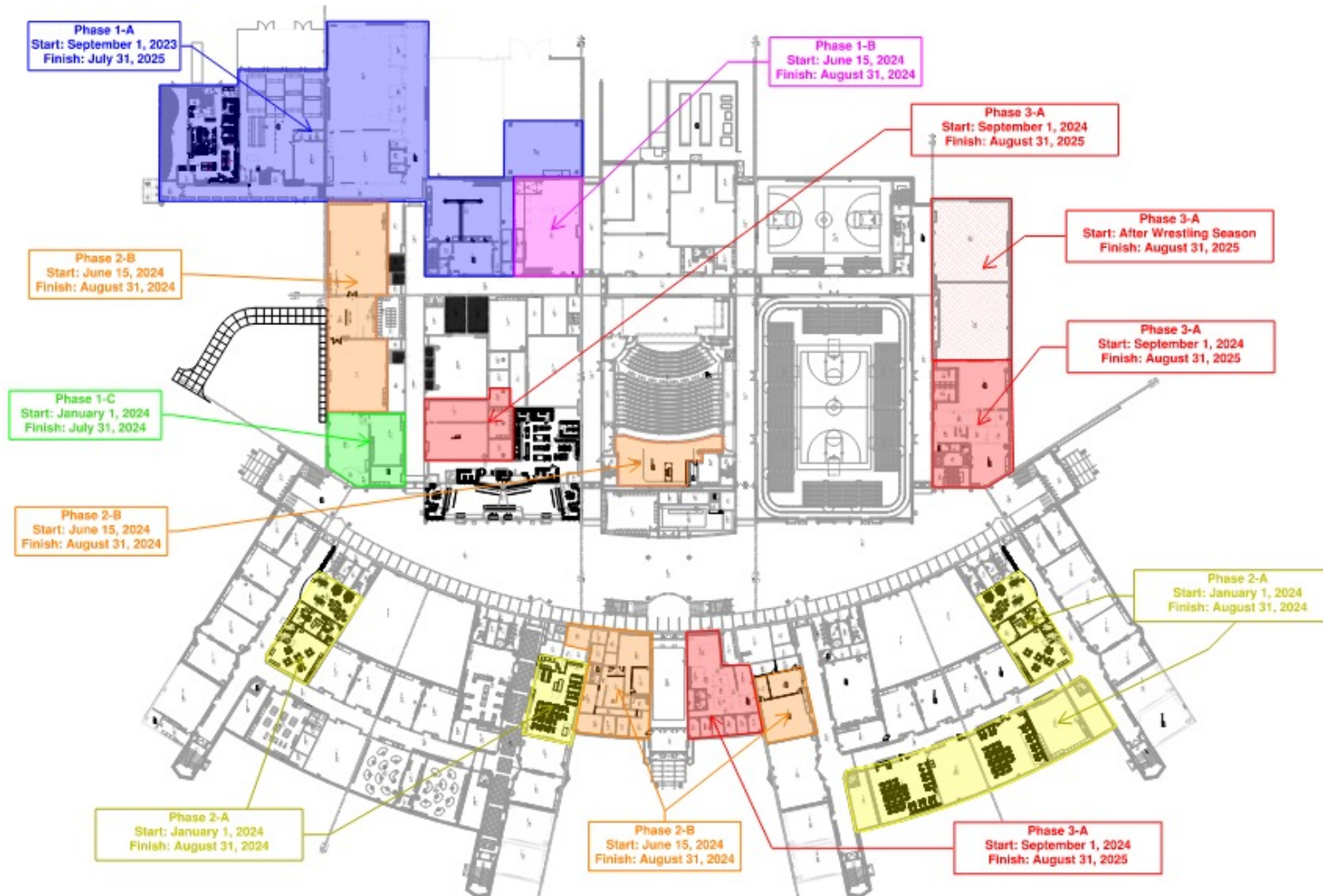


COMPLETED PROJECTS • TRANSPORTATION FENCING



CURRENT PROJECTS • HS ADDITIONS & RENOVATIONS

PHASE
1



12,000 SF ADDITION
Kitchen/Restaurant
Auto Shop
Covered Yard

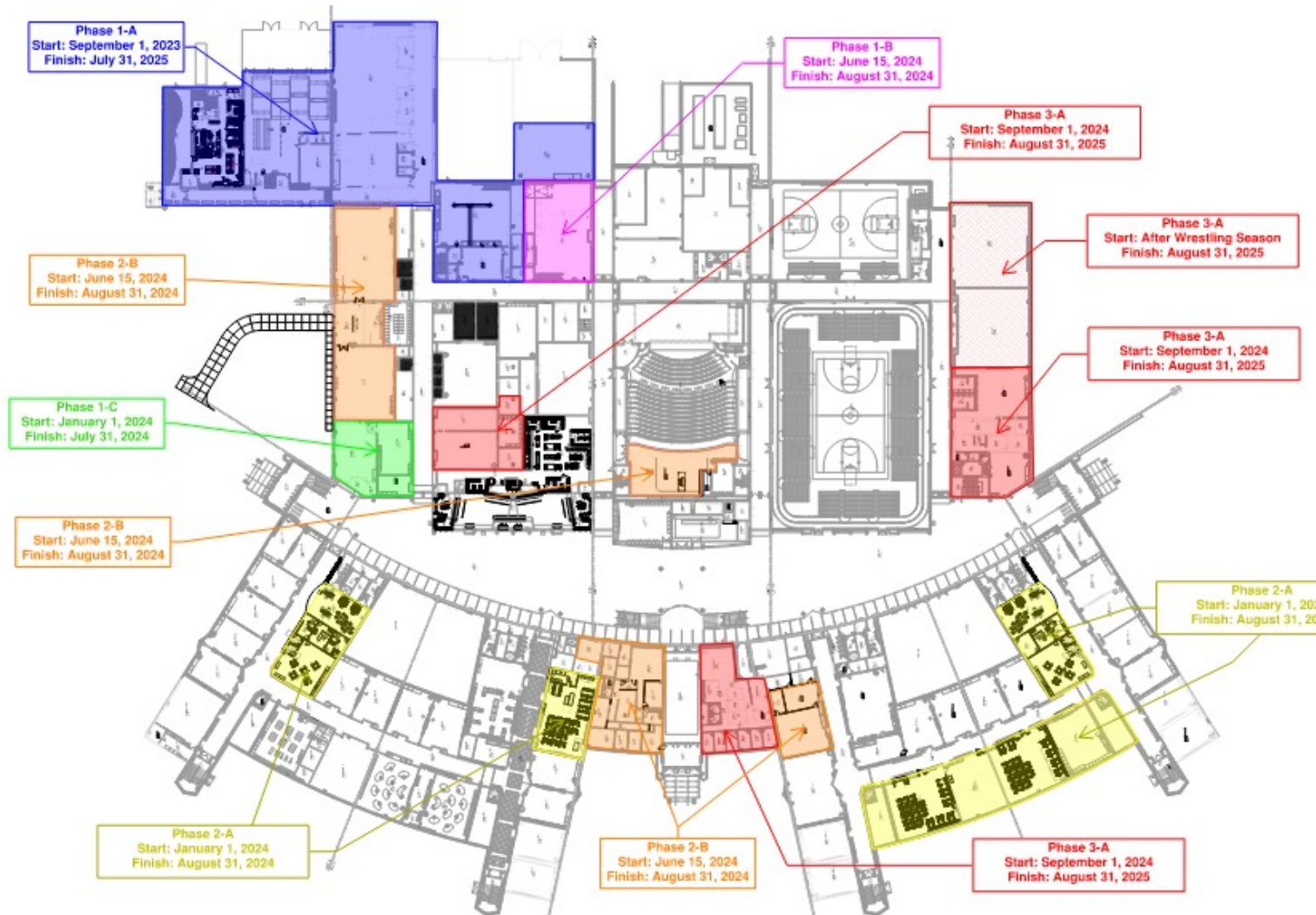


INTERIOR RENOVATIONS
Robotics
Welding
Engineering
Chiller Replacement
Fire Alarm Upgrades

**Barton
Malow**

CURRENT PROJECTS • HS ADDITIONS & RENOVATIONS

PHASE
2



CTE PATHWAY OFFICES



HEALTH & HUMAN SERVICES
Medical Classrooms



GRAPHIC ARTS



LAW / MOCK COURTROOM



BROADCASTING

**Barton
Malow**

CURRENT PROJECTS • HS ADDITIONS & RENOVATIONS

PHASE
1



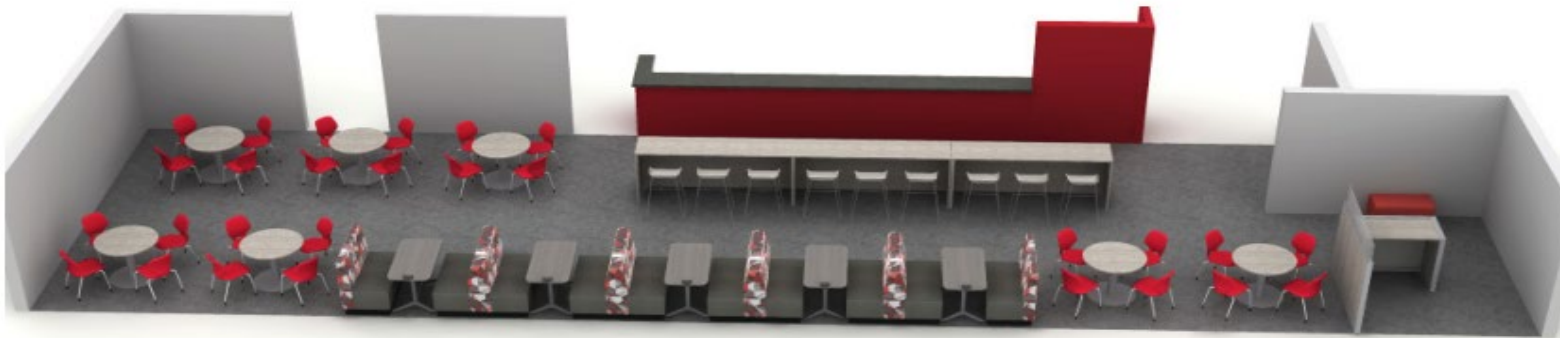
12,000 SF ADDITION

Kitchen/Restaurant
Auto Shop
Covered Yard



INTERIOR RENOVATIONS

Robotics
Welding
Engineering
Chiller Replacement
Fire Alarm Upgrades



**Barton
Malow**

CURRENT PROJECTS • HS ADDITIONS & RENOVATIONS

PHASE
2



COURTROOM - MODE A



COURTROOM - MODE B



CTE PATHWAY OFFICES



HEALTH & HUMAN SERVICES
Medical Classrooms



GRAPHIC ARTS



LAW / MOCK COURTROOM

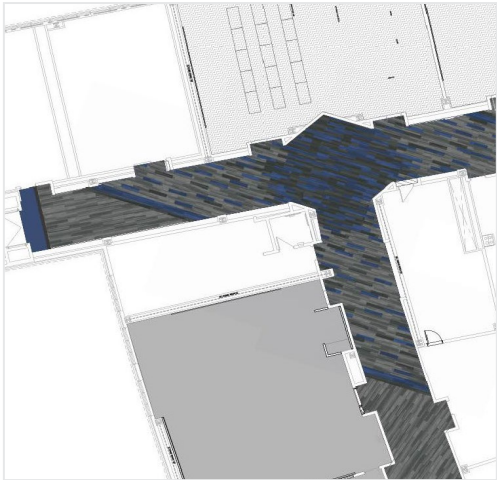


BROADCASTING

**Barton
Malow**

CURRENT PROJECTS • HS ADDITIONS & RENOVATIONS

PHASE
2



CTE PATHWAY OFFICES



HEALTH & HUMAN SERVICES
Medical Classrooms



GRAPHIC ARTS



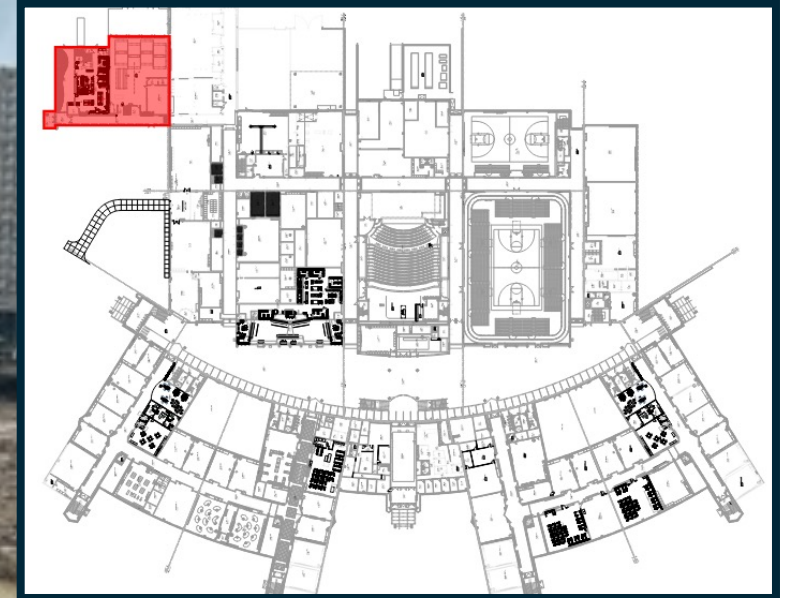
LAW / MOCK COURTROOM



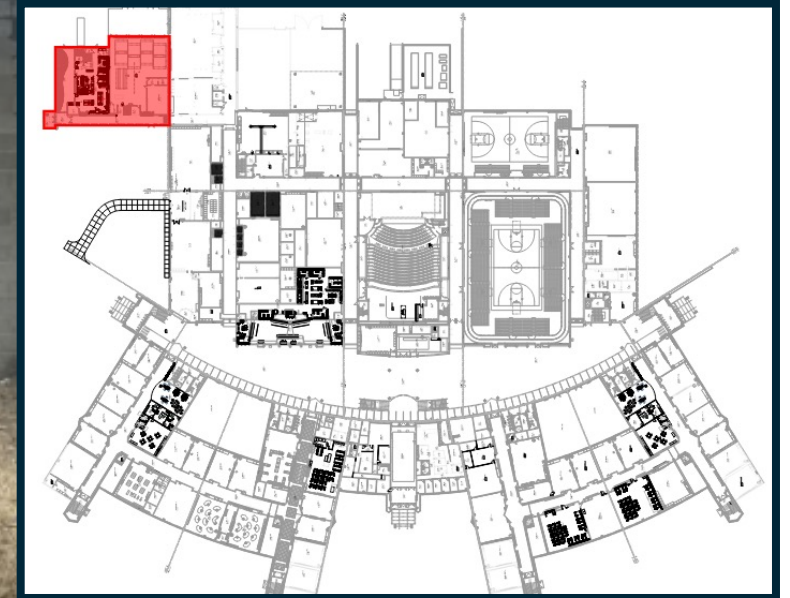
BROADCASTING

**Barton
Malow**

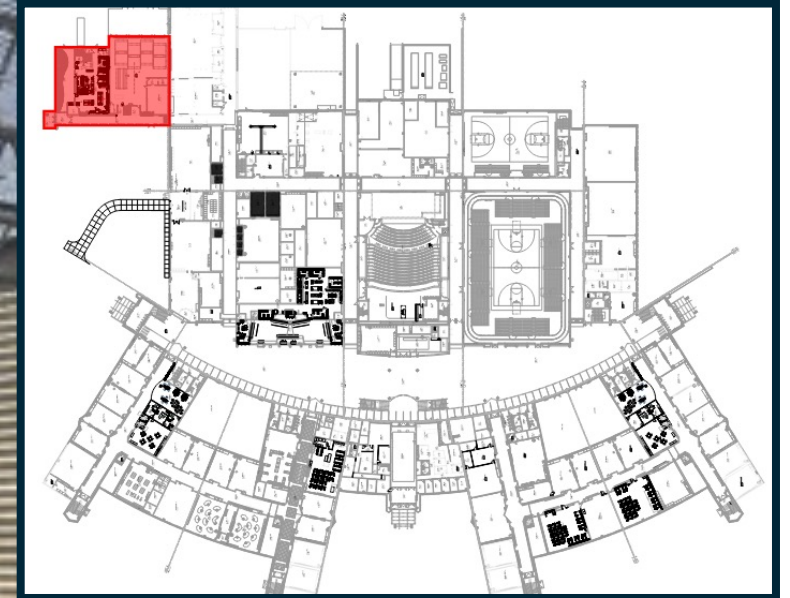
CURRENT PROJECTS • HIGH SCHOOL ADDITION



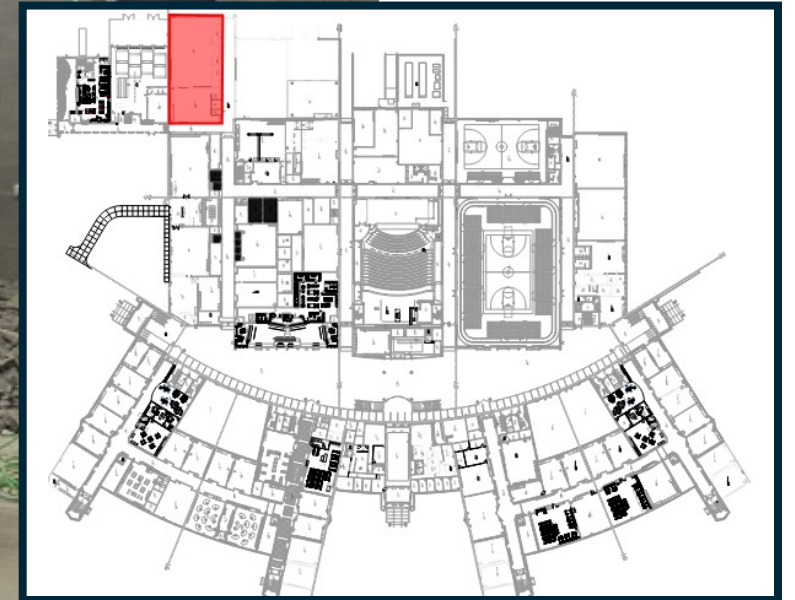
CURRENT PROJECTS • HIGH SCHOOL ADDITION



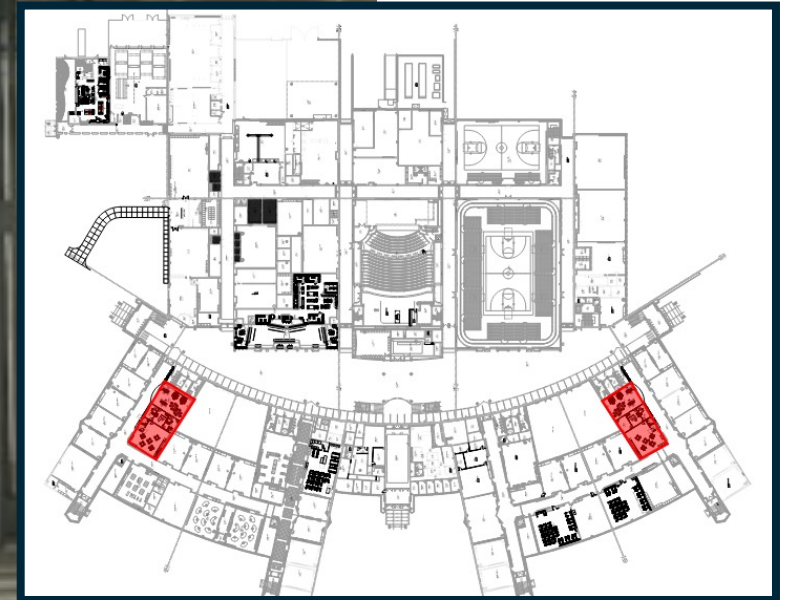
CURRENT PROJECTS • HIGH SCHOOL ADDITION



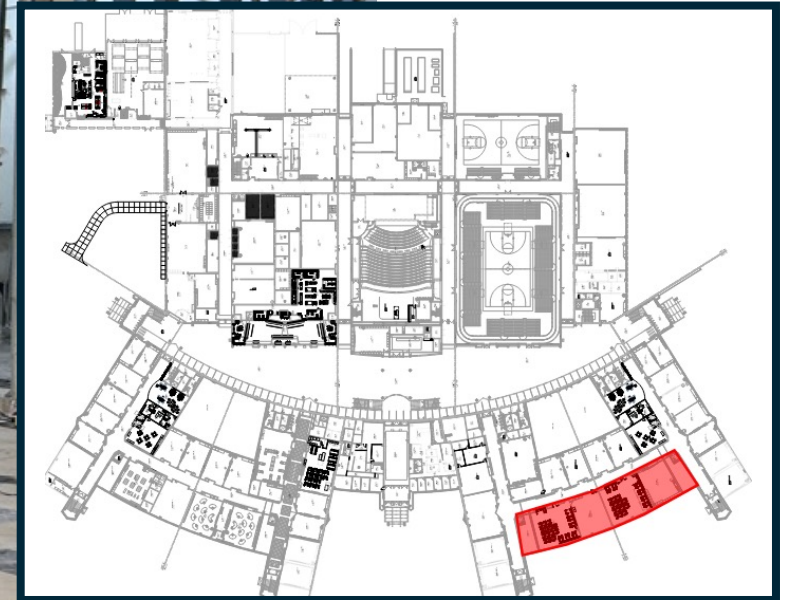
CURRENT PROJECTS • ROBOTICS



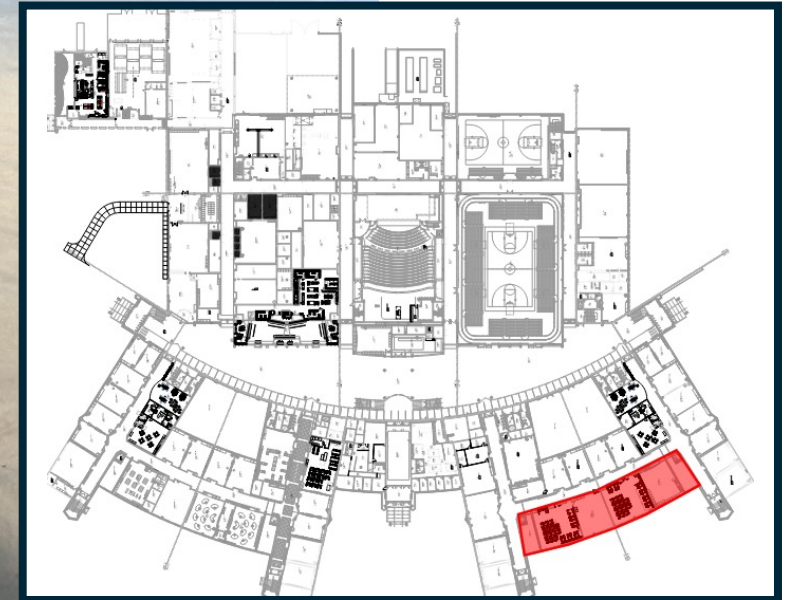
CURRENT PROJECTS • CAREER PATHWAY OFFICE



CURRENT PROJECTS • MEDICAL CLASSROOM RENOVATIONS



CURRENT PROJECTS • MEDICAL CLASSROOM RENOVATIONS

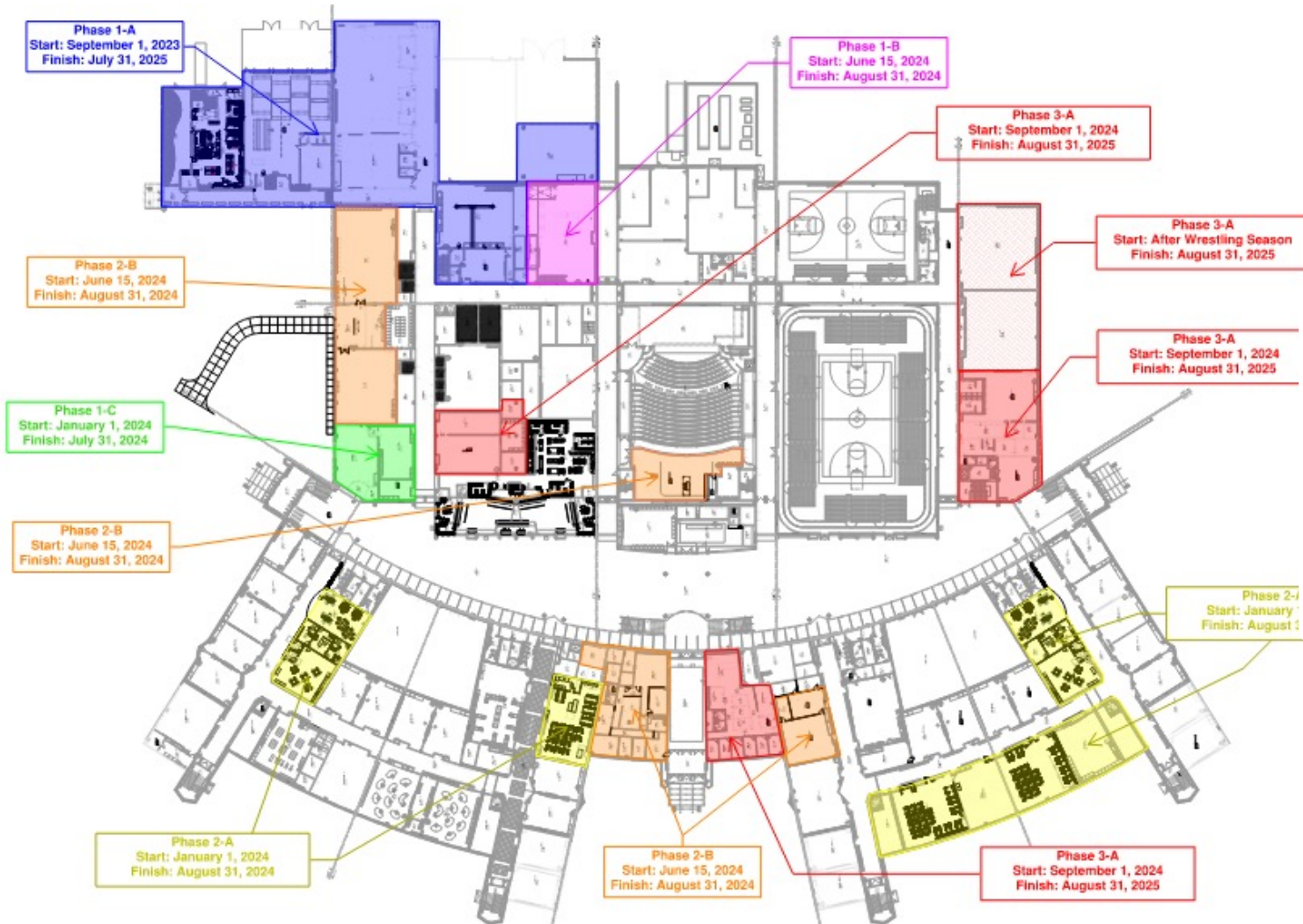


CONSTRUCTION TRADES CLASS • HANDS ON EXPERIENCE

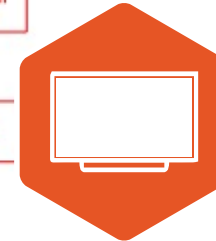


THE NEXT PHASE • HS ADDITIONS & RENOVATIONS

PHASE
3



ATHLETIC WING RENOS
Wrestling Room, Weight Room & Fitness Studio



MEDIA CENTER RENOS



STUDENT SUCCESS CENTER



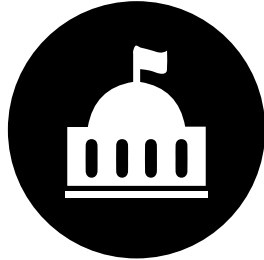
AUX GYM FLOODING SOLUTIONS

**Barton
Malow**



BOND PROGRAM UPDATES

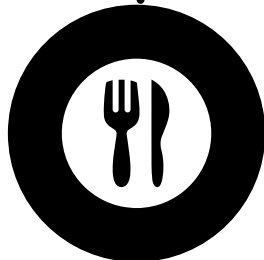
WHAT'S CHANGED SINCE THE BOND PASSED?



Early childhood legislation



Increased enrollment



Universal free & reduced lunch

forecasted

UTILIZATION

[ENROLLMENT VS. CAPACITY]

PRE-K 203%

ELEMENTARY 98%

MIDDLE SCHOOL 58%



TOTAL 90%

STILL ACHIEVING OUR

Goals

EDUCATIONAL GOALS

- ✓ Facilitate *One Anchor Bay* culture
- ✓ Increase educational opportunities
- ✓ Maintain small school atmosphere
- ✓ Provide for project-based learning
- ✓ Create spaces for all learners
- ✓ Enhance design process curriculum
- ✓ Equitable classroom square footage
- ✓ Enhance student support resources

OPERATIONAL GOALS

- ✓ Utilize key existing investments
- ✓ Correct geographical concerns
- ✓ Balance student population
- ✓ Lower operational costs
- ✓ Reduce average age of *K-12 facilities*
- ✓ Reduce *K-12 square footage*

A new day in the Bay



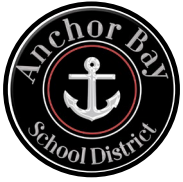
*we are
listening*

**BASED ON
COMMUNITY
INPUT**

No "mega" elementary
schools

Equitable educational
programs for our
middle schools

Reevaluating
Lottie M. Schmidt



HOW DO WE BEST UTILIZE OUR EXISTING SQUARE FOOTAGE TO ACHIEVE A ROBUST EARLY CHILDHOOD PROGRAM?

ADJUST GRADE LEVEL CONFIGURATION?

yes

no

OPEN MACDONALD ELEMENTARY?

yes

no

OPEN MACDONALD ELEMENTARY?

yes

no

ASHLEY OR LIGHTHOUSE?

ASHLEY OR LIGHTHOUSE?

ASHLEY OR LIGHTHOUSE?

ASHLEY OR LIGHTHOUSE?

PRE-K
Lighthouse
Lottie

PRE-K
Ashley
Lottie

PRE-K
Lighthouse
Lottie

PRE-K
Ashley
Lottie

PRE-K
Lighthouse
Lottie

PRE-K
Ashley
Lottie

PRE-K
Lighthouse
Lottie

PRE-K
Ashley
Lottie

K-4
Ashley
Great Oaks
Maconce
Naldrett
MacDonald

K-4
Lighthouse
Great Oaks
Maconce
Naldrett
MacDonald

K-4
Ashley
Great Oaks
Maconce
Naldrett

K-4
Lighthouse
Great Oaks
Maconce
Naldrett

K-5
Ashley
Great Oaks
Maconce
Naldrett
MacDonald

K-5
Lighthouse
Great Oaks
Maconce
Naldrett
MacDonald

K-5
Ashley
Great Oaks
Maconce
Naldrett

K-5
Lighthouse
Great Oaks
Maconce
Naldrett

5-6
M.S. North

5-6
M.S. North

5-6
M.S. North

5-6
M.S. North

6-8
M.S. North
M.S. South

6-8
M.S. North
M.S. South

6-8
M.S. North
M.S. South

6-8
M.S. North
M.S. South

7-8
M.S. South

7-8
M.S. South

7-8
M.S. South

7-8
M.S. South

CHANGE GRADE LEVEL CONFIGURATION

why REASONS TO CONSIDER

Middle School North & South underutilized

Better utilize available capacity


Middle schools *58% utilized (enrollment vs. capacity)*

Elementary schools are near capacity

Leverage bond dollars for universal pre-k space

Balance utilization across elementary & middle schools

- 
- ✓ Facilitate One Anchor Bay culture sooner
 - ✓ Consistent & enhanced programming
 - ✓ Closes 5/6 student achievement gap
 - ✓ Additional athletic / extra curricular opportunities
 - ✓ Equalizes MS experiences & opportunities for students
 - ✓ Improves transportation & eliminates shuttling
 - ✓ Balances space utilization
 - ✓ Eliminates need for "mega" elementary school
 - ✓ No more "North" vs. "South" mentality

- 
- ✗ Additional transition
 - ✗ Length of travel for some / increased bus time
 - ✗ Impact on siblings

OPEN MACDONALD ELEMENTARY SCHOOL

why REASONS TO CONSIDER

Unused square footage

Better utilize available classroom space

Current elementary schools are near capacity

Maintain smaller class sizes

Future enrollment projections

Regional development & expansion (26 Mile)



- ✓ Balances space utilization
- ✓ Eliminates need for “mega” elementary school
- ✓ Anticipated area of growth
- ✓ MacDonald is one of the newer district facilities
- ✓ Using newer district facility
- ✓ Using existing investment instead of building new



- ✗ Location to current student population
- ✗ Administration relocation
- ✗ Redistricting

ASHLEY OR LIGHTHOUSE AS ELEMENTARY

why REASONS TO CONSIDER

Centrally located facilities

Two elementary schools on one campus

Lighthouse is the district's largest elementary school

Lighthouse is the district's oldest elementary school

ASHLEY AS ELEMENTARY



- ✓ 2017 bond improvements
- ✓ More flexible site (playgrounds, athletic fields)
- ✓ Better traffic flow, parking & growth
- ✓ Lower renovation cost
- ✓ Newer building

LIGHTHOUSE AS ELEMENTARY



- ✓ Utilize existing square footage
- ✓ Could be more cost effective (depending on solution)

original **BOND**

PRE-K
Lighthouse
Lottie

K-5
Ashley
Great Oaks
Maconce
Naldrett
MacDonald

6-8
M.S. North

6-8
M.S. South

← Lighthouse stays as ECC →
← Lottie possibly stays open →

Grade Reconfiguration:
K-5 changes to K-4

← Re-Open MacDonald K-4 →

← Grade Reconfiguration:
6-8 changes to 5-6 →

← Grade Reconfiguration:
6-8 changes to 7-8 →

updated **PLAN**

PRE-K
Lighthouse
Lottie

K-4
Ashley
Great Oaks
Maconce
Naldrett
MacDonald

5-6
M.S. North

7-8
M.S. South

forecasted

UTILIZATION

[ENROLLMENT VS. CAPACITY]

PRE-K 203%

ELEMENTARY 98%

MIDDLE SCHOOL 58%

.....

TOTAL 90%

actual

UTILIZATION

[ENROLLMENT VS. CAPACITY]

PRE-K 92%

ELEMENTARY 78%

MIDDLE SCHOOL 90%

.....

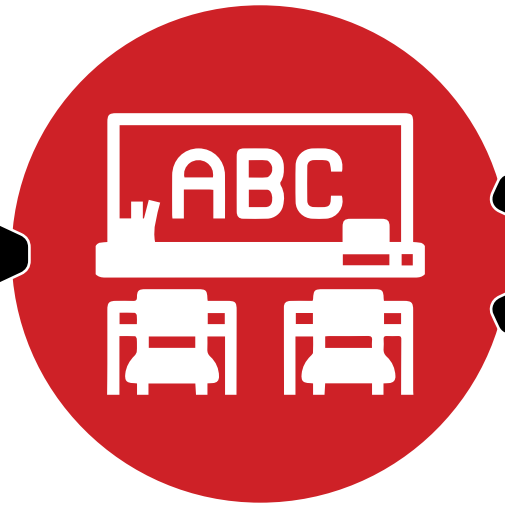
TOTAL 84%

UTILIZATION BASED ON ADDITION OF UNIVERSAL PRESCHOOL

HOW CAN WE MAXIMIZE BOND DOLLARS WITH NEW RECONFIGURATION PLAN?



Enrollment is increasing throughout the district & especially for Pre-K (via upcoming legislation)



More classroom space is needed to accomodate increase - we can utilize existing building square footage

Re-Open MacDonald
Lottie & Lighthouse
Middle School
Reconfiguration



Decrease new construction & additions by utilizing the exisging building square footage

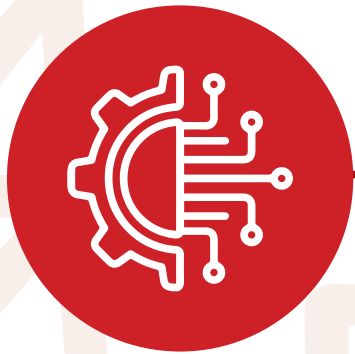
New construction is considerably more expensive than renovations or remodels



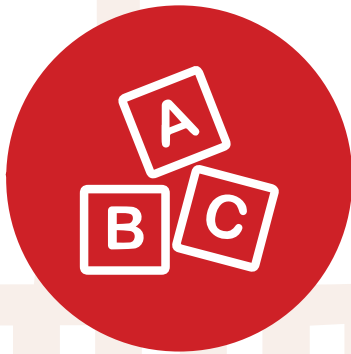
Increase savings & invest more into student programming & enhancements

WHAT COULD WE DO WITH
\$5-20M IN ADDITIONAL FACILITY

enhancements



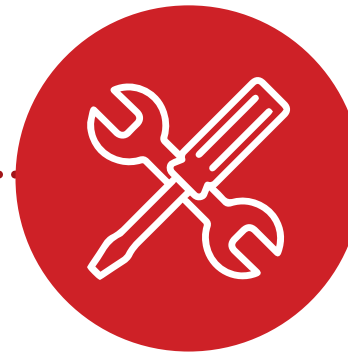
Additional
M.S. CTE
enhancements



Further
elementary
programming
enhancements



Create
new science
labs



More
infrastructure
improvements



Additional
programming
improvements
at Great Oaks
& Maconce

STILL ACHIEVING OUR

Goals

EDUCATIONAL GOALS

- ✓ Facilitate *One Anchor Bay* culture
- ✓ Increase educational opportunities
- ✓ Maintain small school atmosphere
- ✓ Provide for project-based learning
- ✓ Create spaces for all learners
- ✓ Enhance design process curriculum
- ✓ Equitable classroom square footage
- ✓ Enhance student support resources

OPERATIONAL GOALS

- ✓ Utilize key existing investments
- ✓ Correct geographical concerns
- ✓ Balance student population
- ✓ Lower operational costs
- ✓ Reduce average age of *K-12 facilities*
- ✓ Reduce *K-12 square footage*

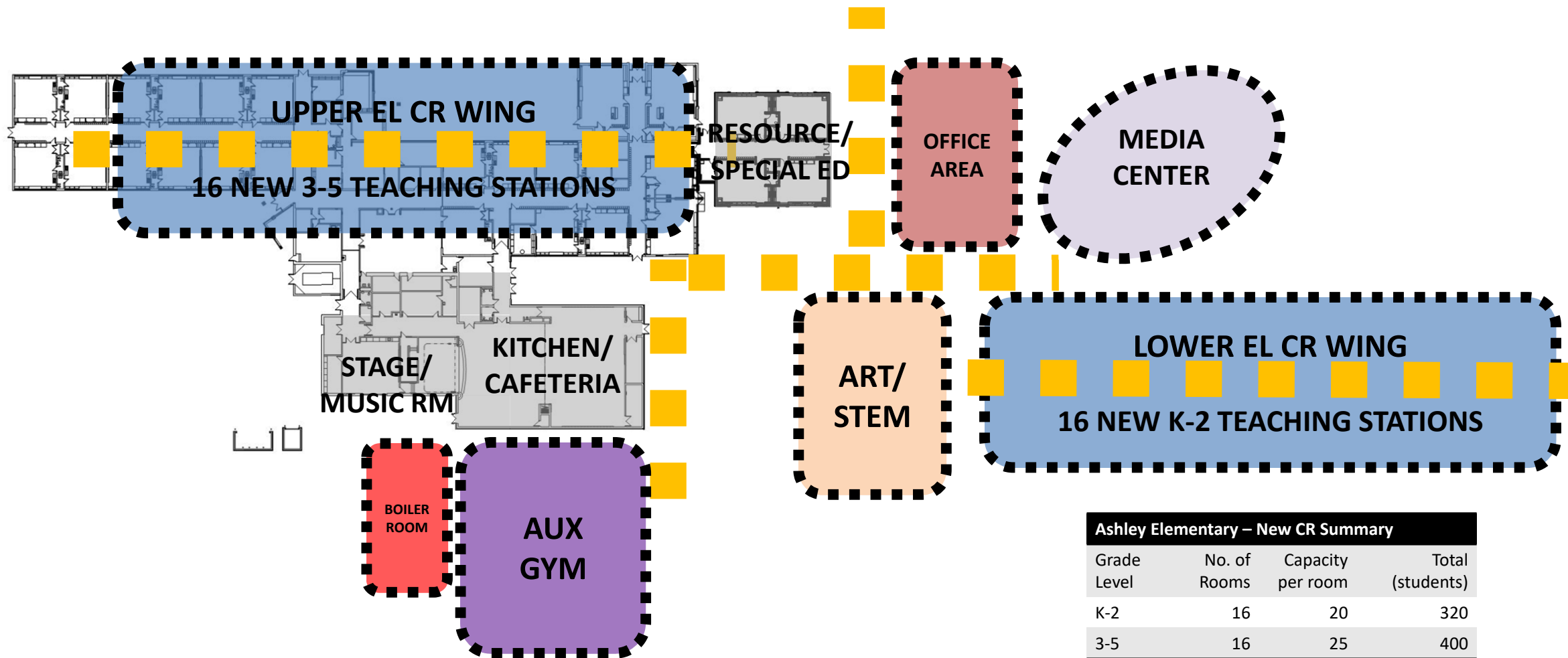
A new day in the Bay



**WHAT DOES THIS
MEAN FOR ASHLEY?**

ASHLEY ELEMENTARY SCHOOL

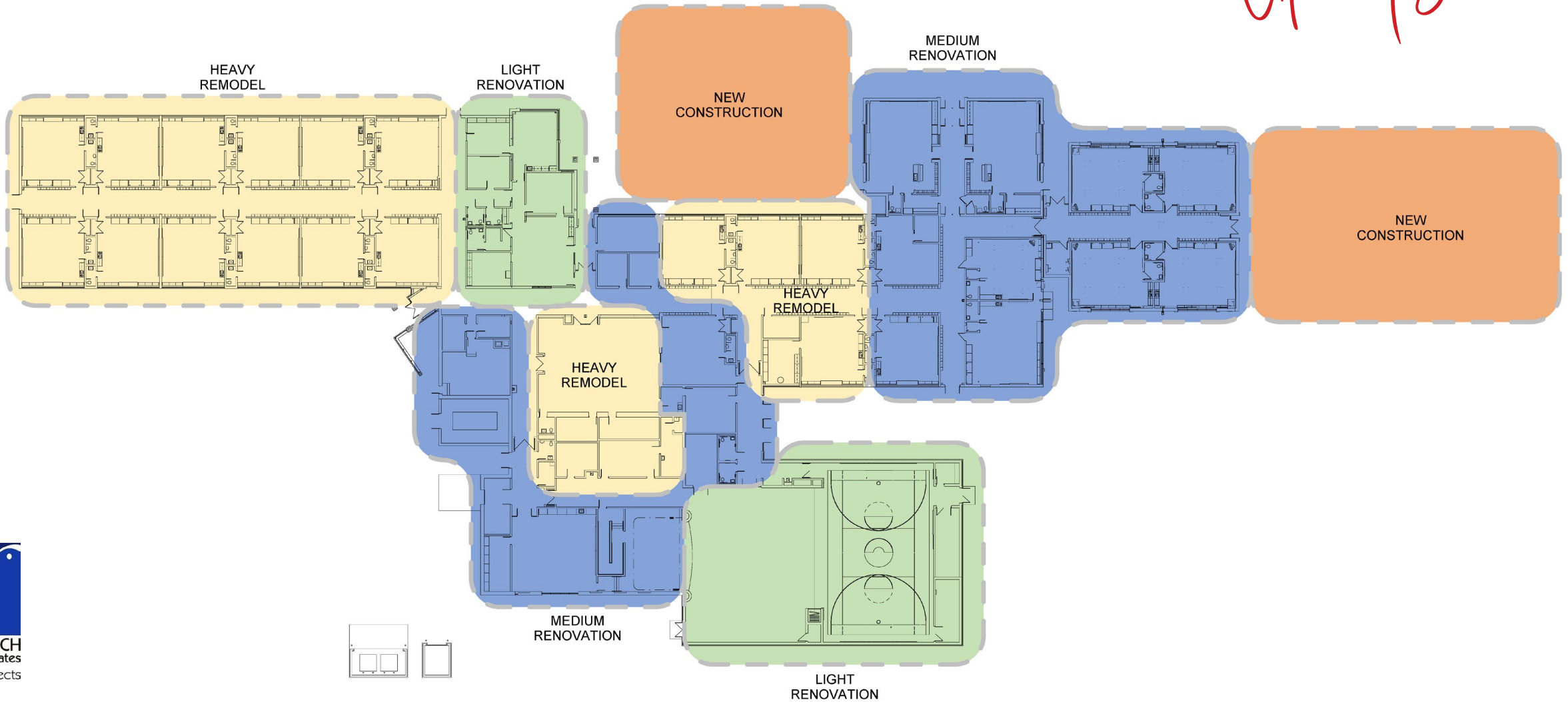
Original Plan



Ashley Elementary – New CR Summary			
Grade Level	No. of Rooms	Capacity per room	Total (students)
K-2	16	20	320
3-5	16	25	400
TOTAL	32		720

ASHLEY ELEMENTARY SCHOOL

Updates



LIGHT RENOVATION

select architectural finish replacement

MEDIUM RENOVATION

architectural finish upgrades &/or infrastructure changes to existing spaces

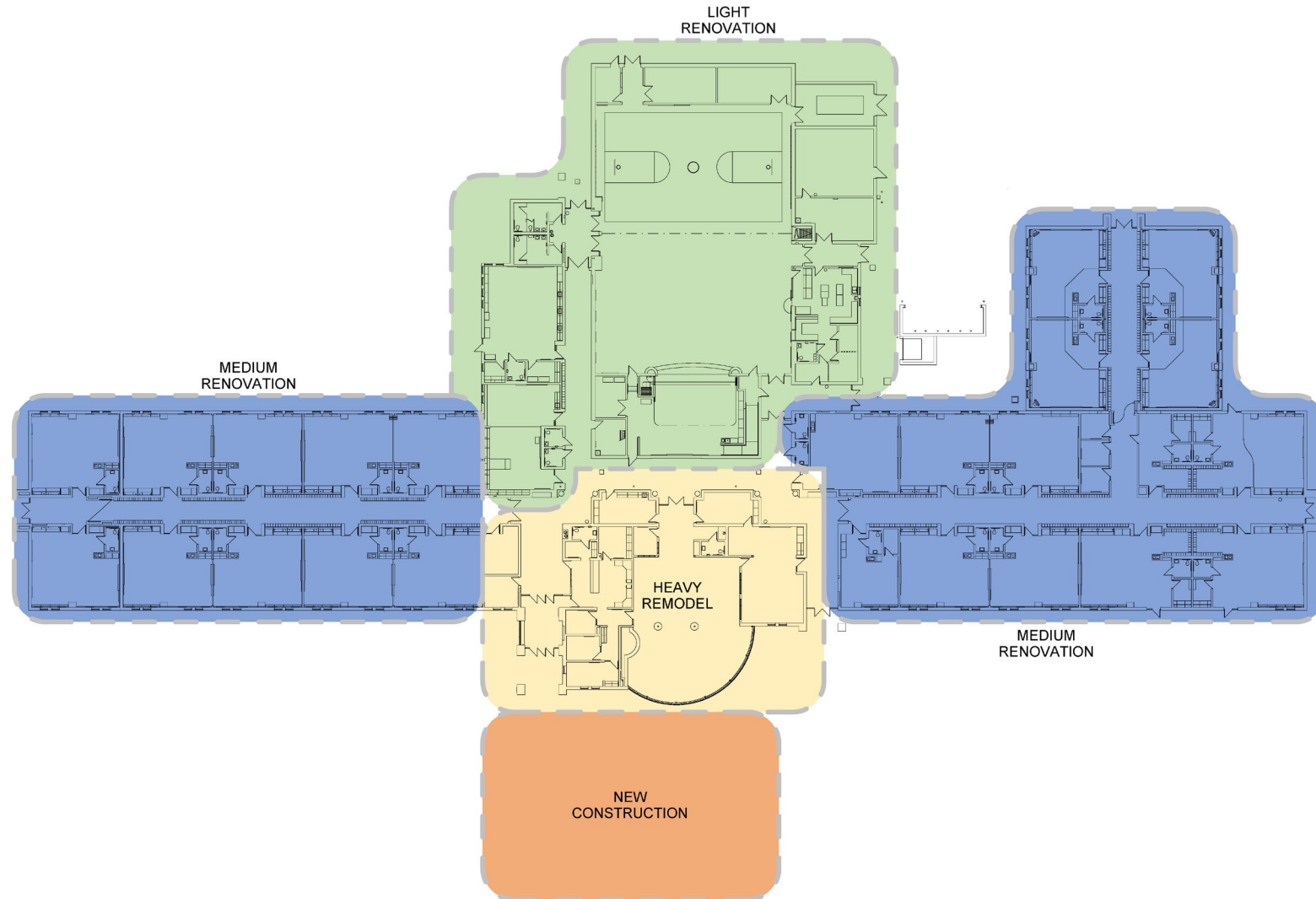
HEAVY REMODEL

complete demo & remodel including relocating walls & all finishes

NEW CONSTRUCTION

additional building space created

GREAT OAKS ELEMENTARY SCHOOL *Updates*



LIGHT RENOVATION

select architectural finish replacement

MEDIUM RENOVATION

architectural finish upgrades &/or infrastructure changes to existing spaces

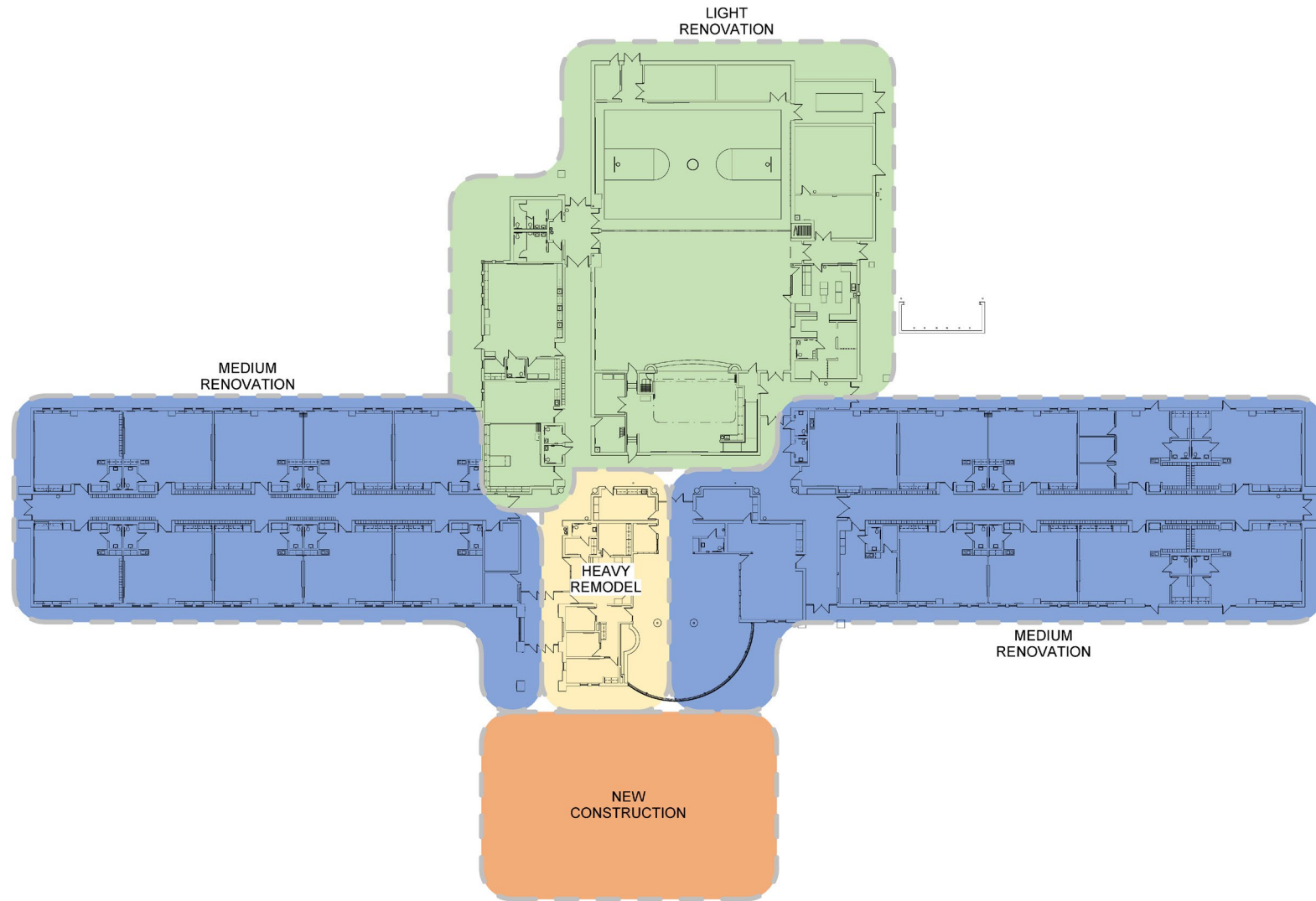
HEAVY REMODEL

complete demo & remodel including relocating walls & all finishes

NEW CONSTRUCTION

additional building space created

MACONCE ELEMENTARY SCHOOL *Updates*



LIGHT RENOVATION

select architectural finish replacement



MEDIUM RENOVATION

architectural finish upgrades &/or infrastructure changes to existing spaces



HEAVY REMODEL

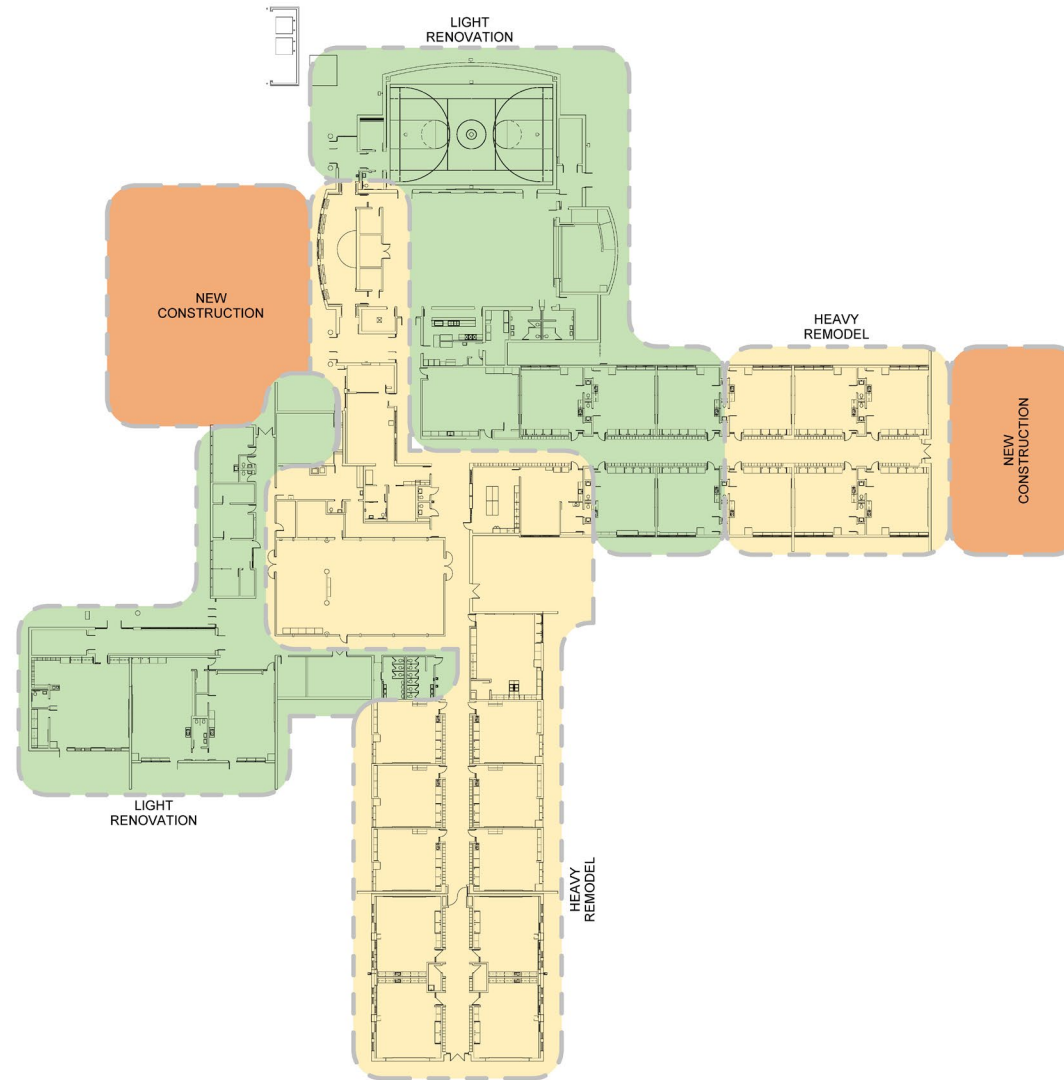
complete demo & remodel including relocating walls & all finishes



NEW CONSTRUCTION

additional building space created

NALDRETT ELEMENTARY SCHOOL *Updates*



LIGHT RENOVATION

select architectural finish
replacement



MEDIUM RENOVATION

architectural finish upgrades &/or
infrastructure changes to existing spaces



HEAVY REMODEL

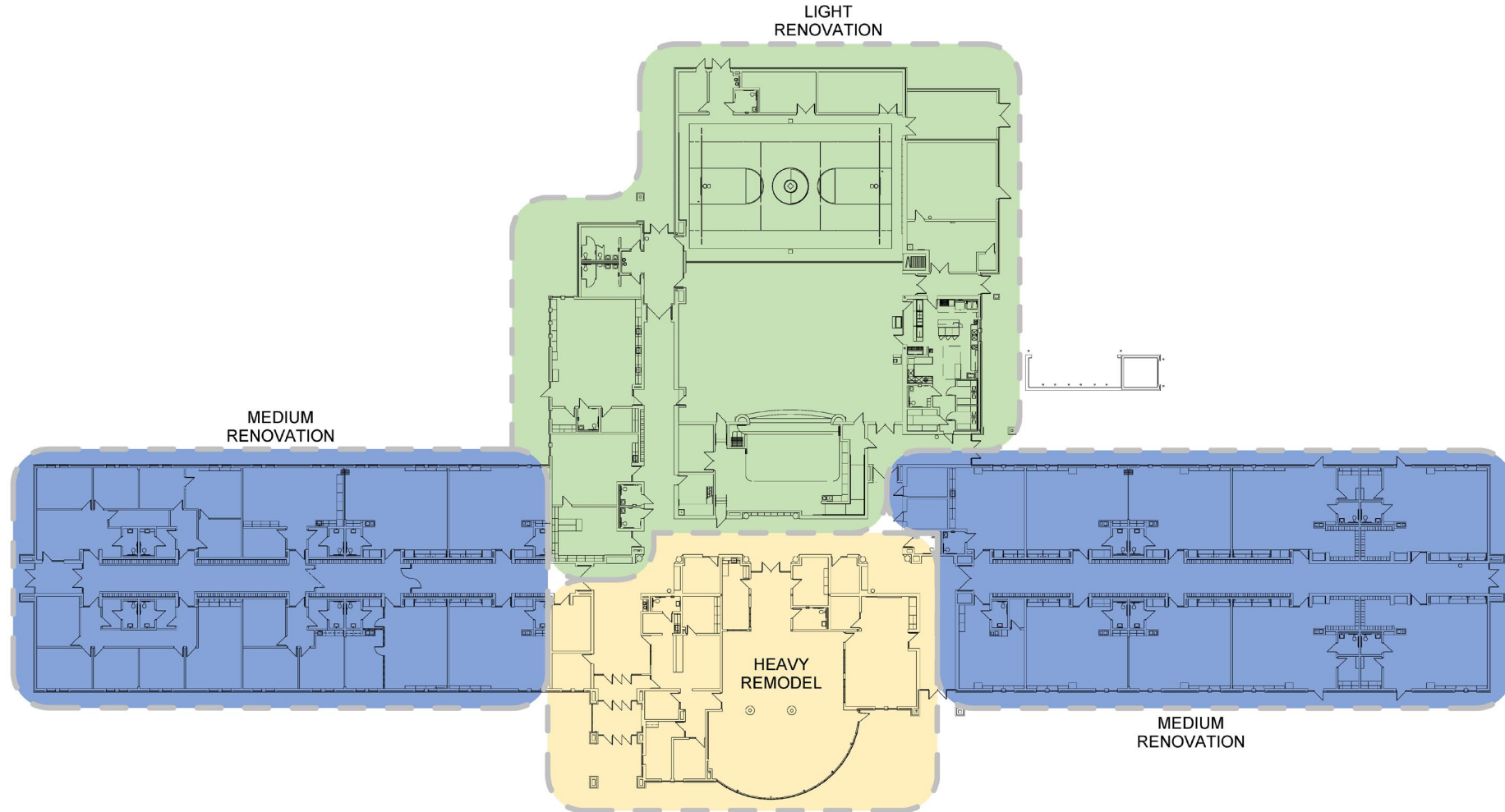
complete demo & remodel including
relocating walls & all finishes



NEW CONSTRUCTION

additional building space
created

MACDONALD ELEMENTARY SCHOOL *Updates*



LIGHT RENOVATION

select architectural finish replacement



MEDIUM RENOVATION

architectural finish upgrades &/or infrastructure changes to existing spaces



HEAVY REMODEL

complete demo & remodel including relocating walls & all finishes

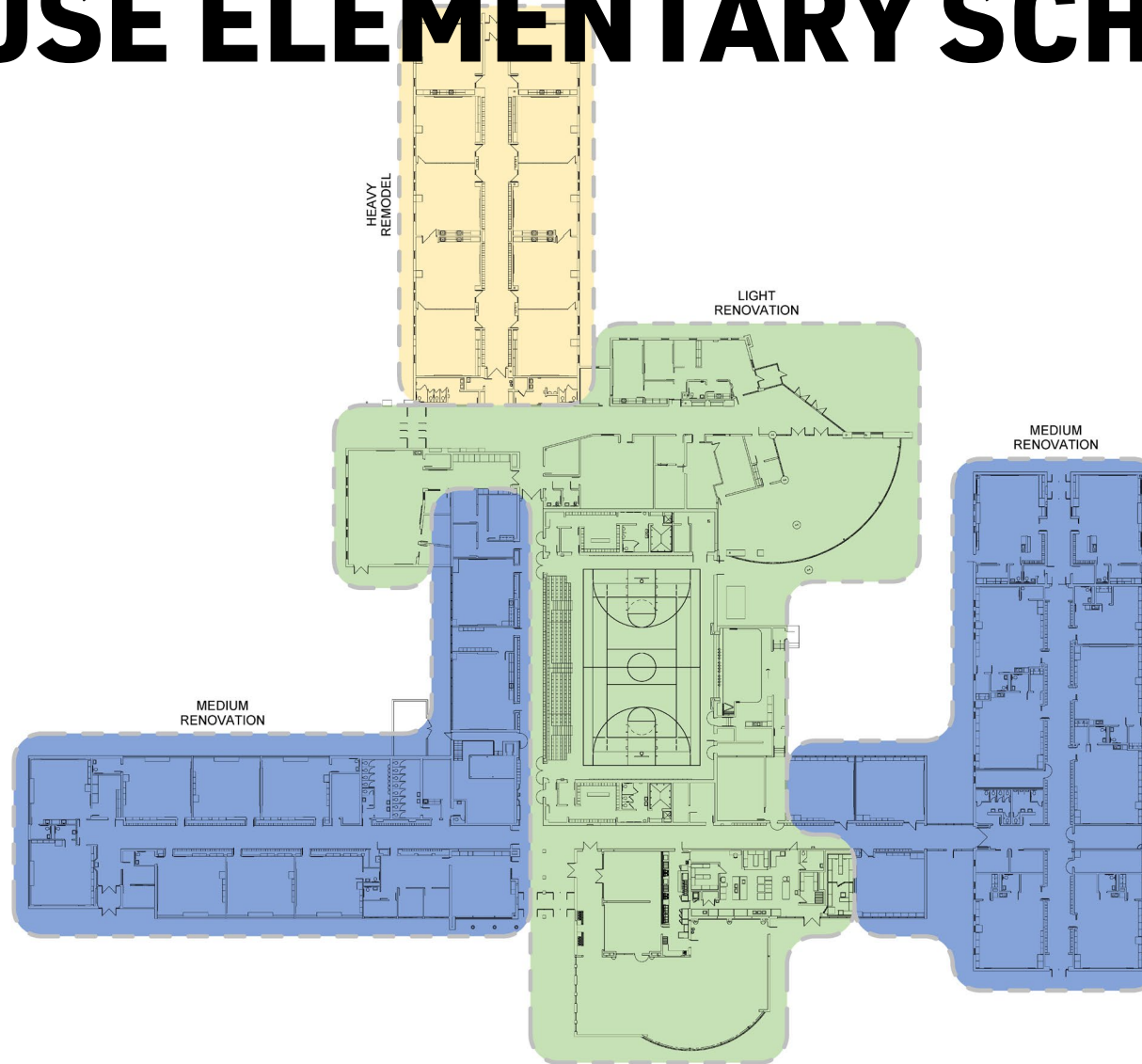


NEW CONSTRUCTION

additional building space created

LIGHTHOUSE ELEMENTARY SCHOOL

Updates



LIGHT RENOVATION

select architectural finish
replacement

MEDIUM RENOVATION

architectural finish upgrades &/or
infrastructure changes to existing spaces

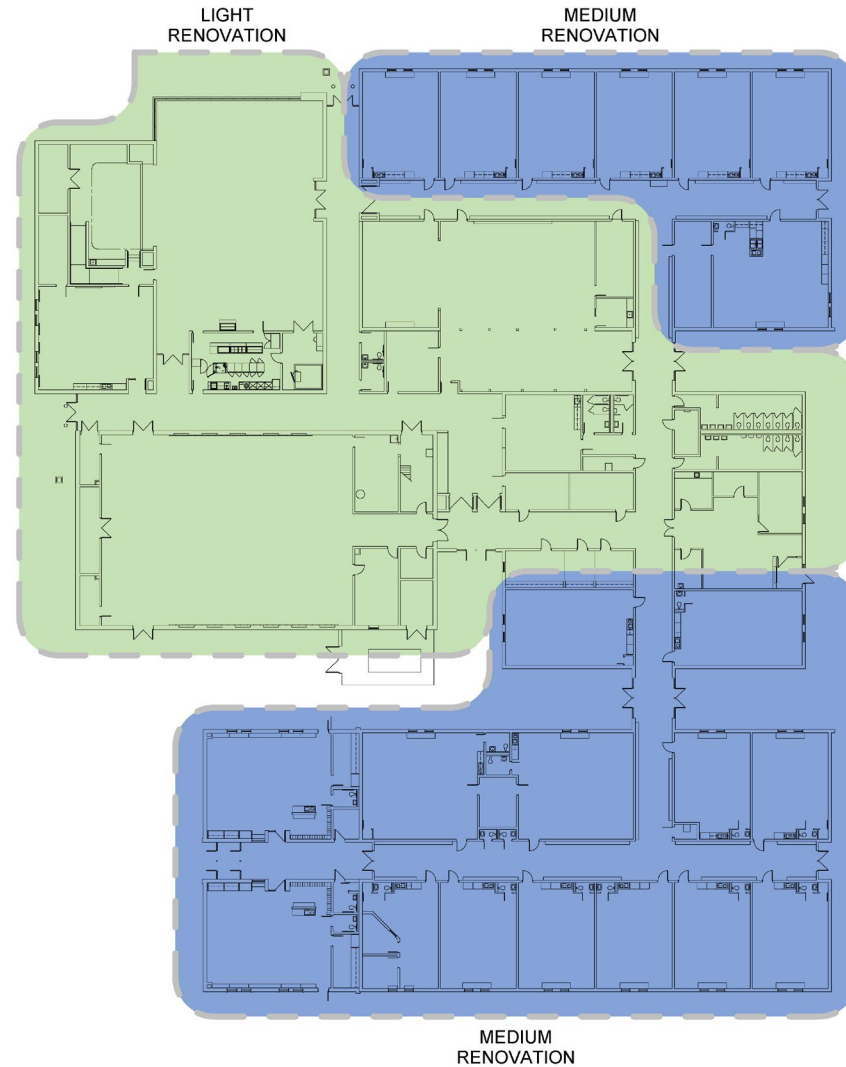
HEAVY REMODEL

complete demo & remodel including
relocating walls & all finishes

NEW CONSTRUCTION

additional building space
created

LOTTIE ELEMENTARY SCHOOL *Updates*



FRENCH
associates
architects

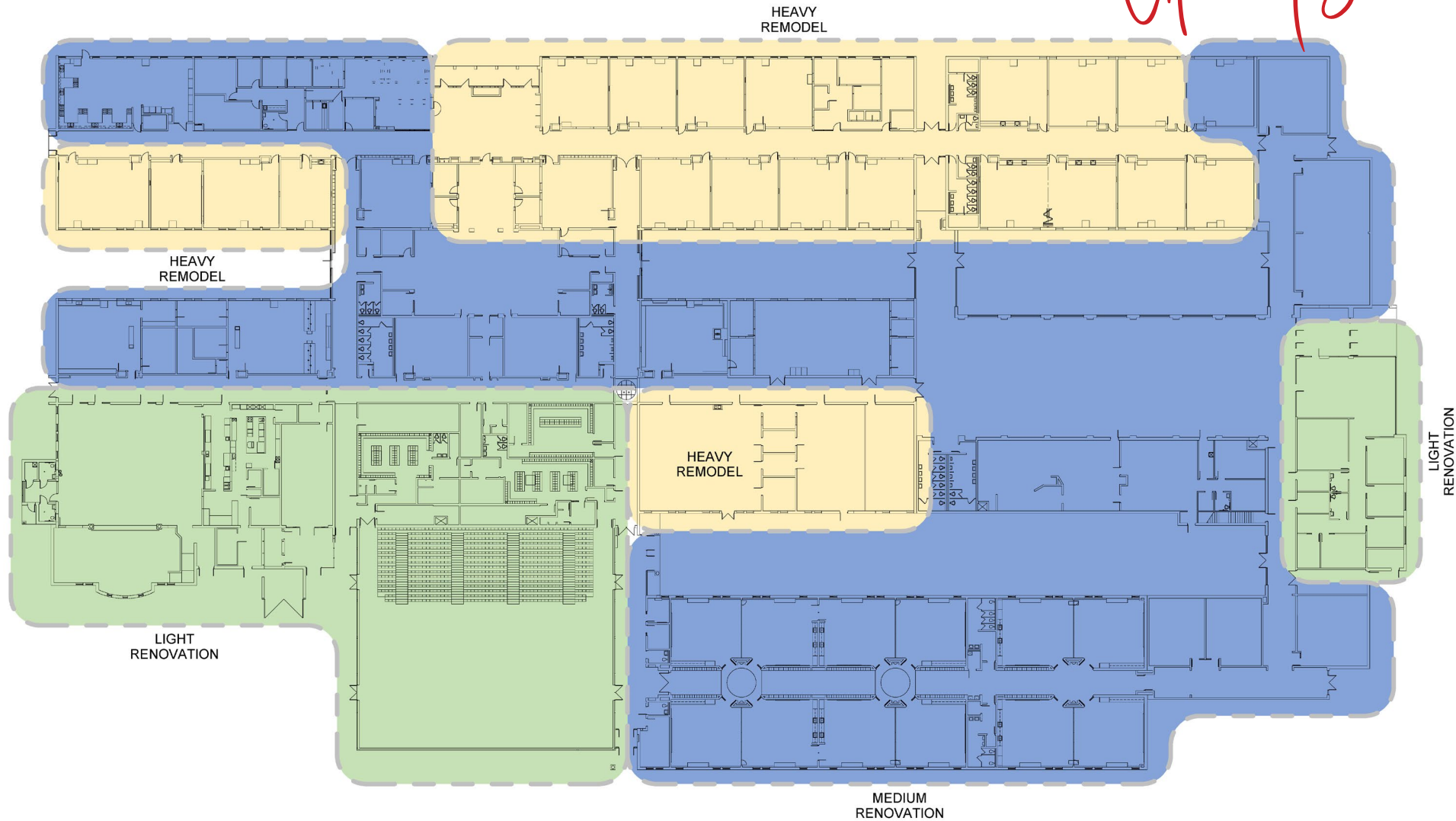
LIGHT RENOVATION
select architectural finish
replacement

MEDIUM RENOVATION
architectural finish upgrades &/or
infrastructure changes to existing spaces

HEAVY REMODEL
complete demo & remodel including
relocating walls & all finishes

NEW CONSTRUCTION
additional building space
created

MIDDLE SCHOOL NORTH *Updates*



LIGHT RENOVATION

select architectural finish
replacement



MEDIUM RENOVATION

architectural finish upgrades &/or
infrastructure changes to existing spaces



HEAVY REMODEL

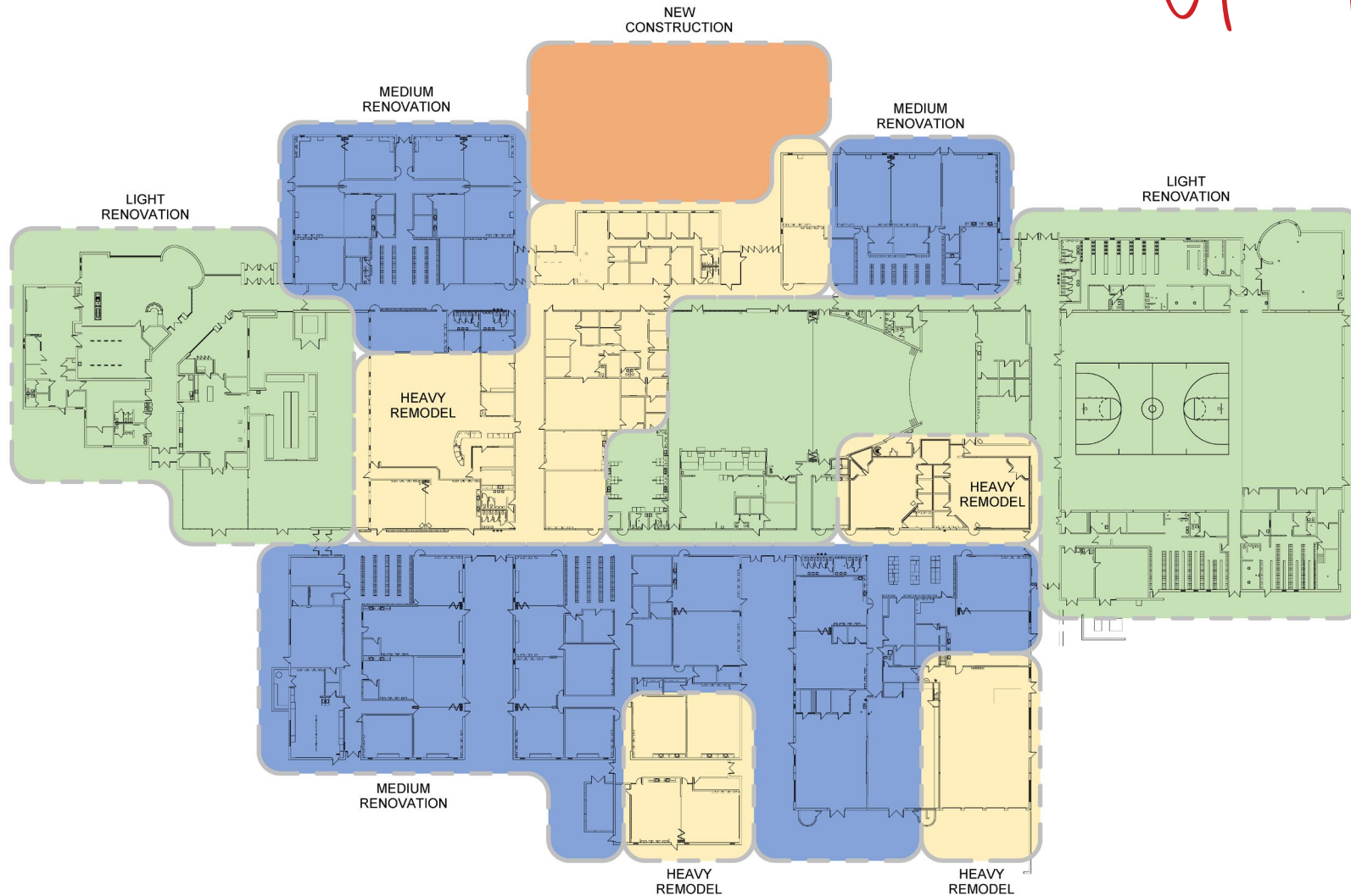
complete demo & remodel including
relocating walls & all finishes



NEW CONSTRUCTION

additional building space
created

MIDDLE SCHOOL SOUTH *Updates*



LIGHT RENOVATION

select architectural finish replacement

MEDIUM RENOVATION

architectural finish upgrades &/or infrastructure changes to existing spaces

HEAVY REMODEL

complete demo & remodel including relocating walls & all finishes

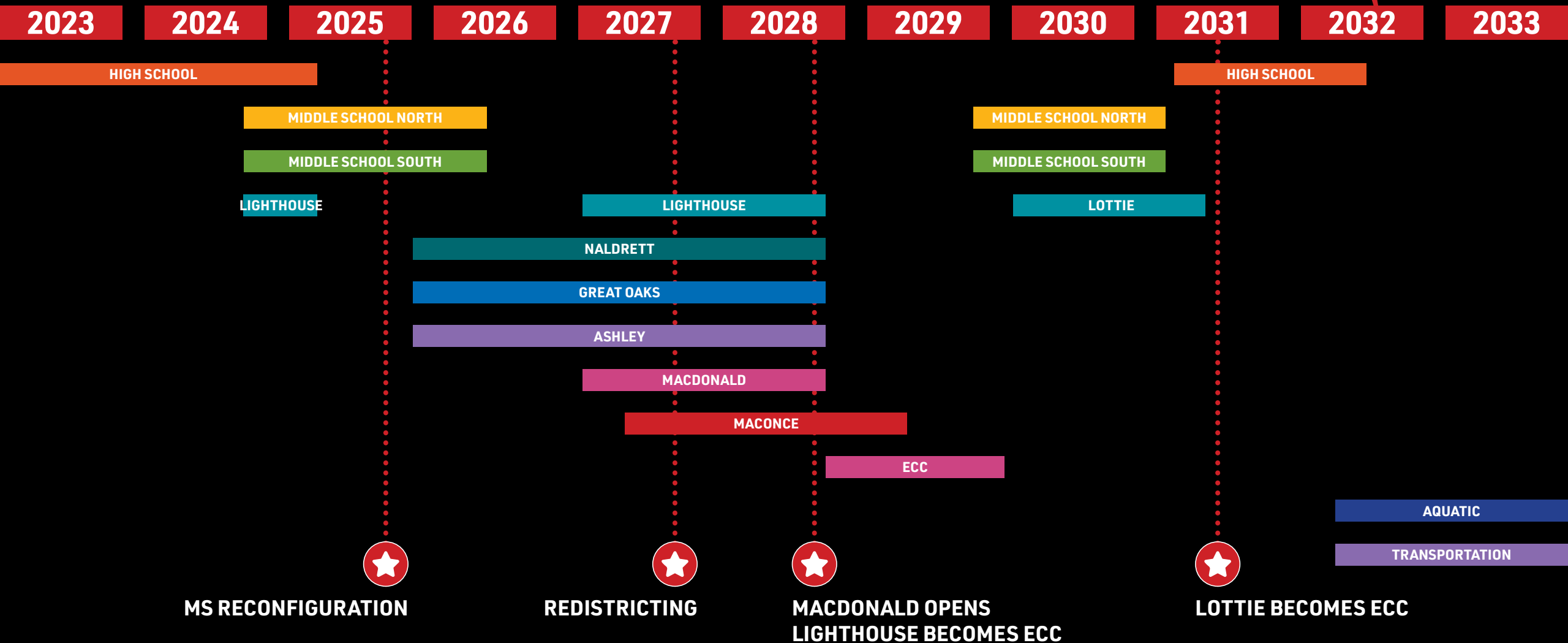
NEW CONSTRUCTION

additional building space created

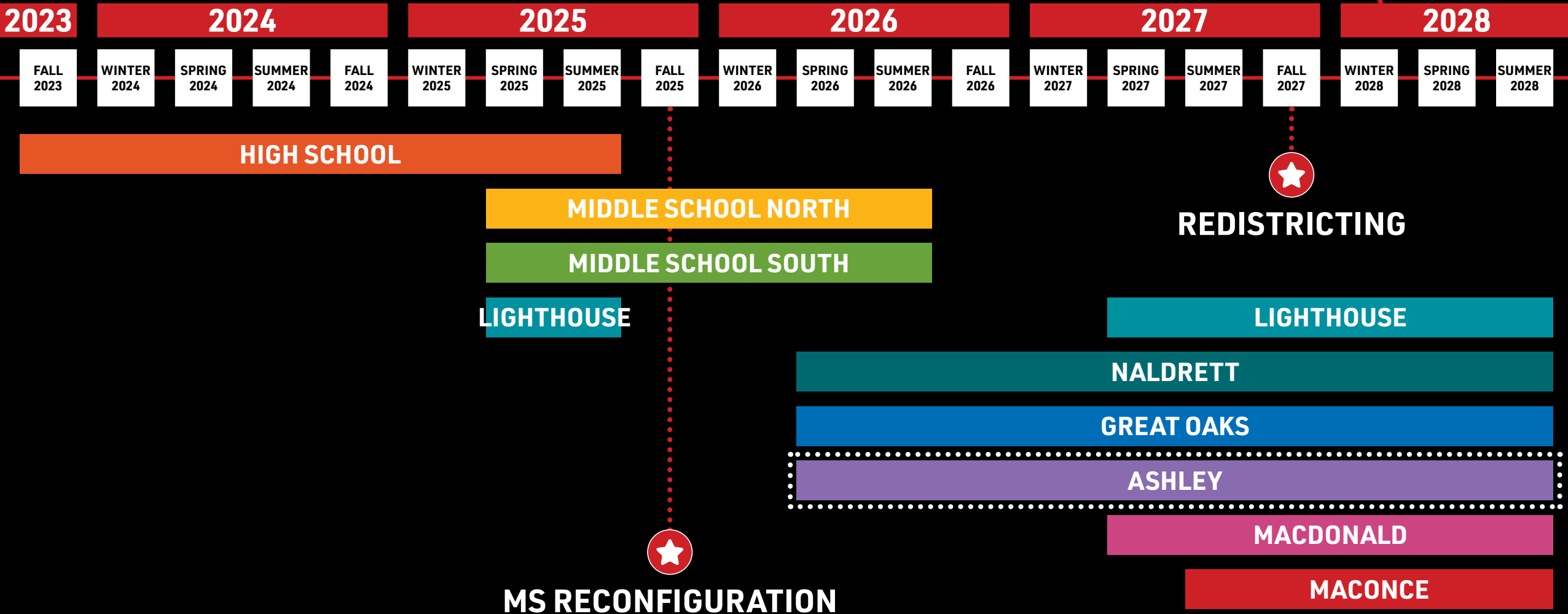


ANCHOR BAY BOND SCHEDULE

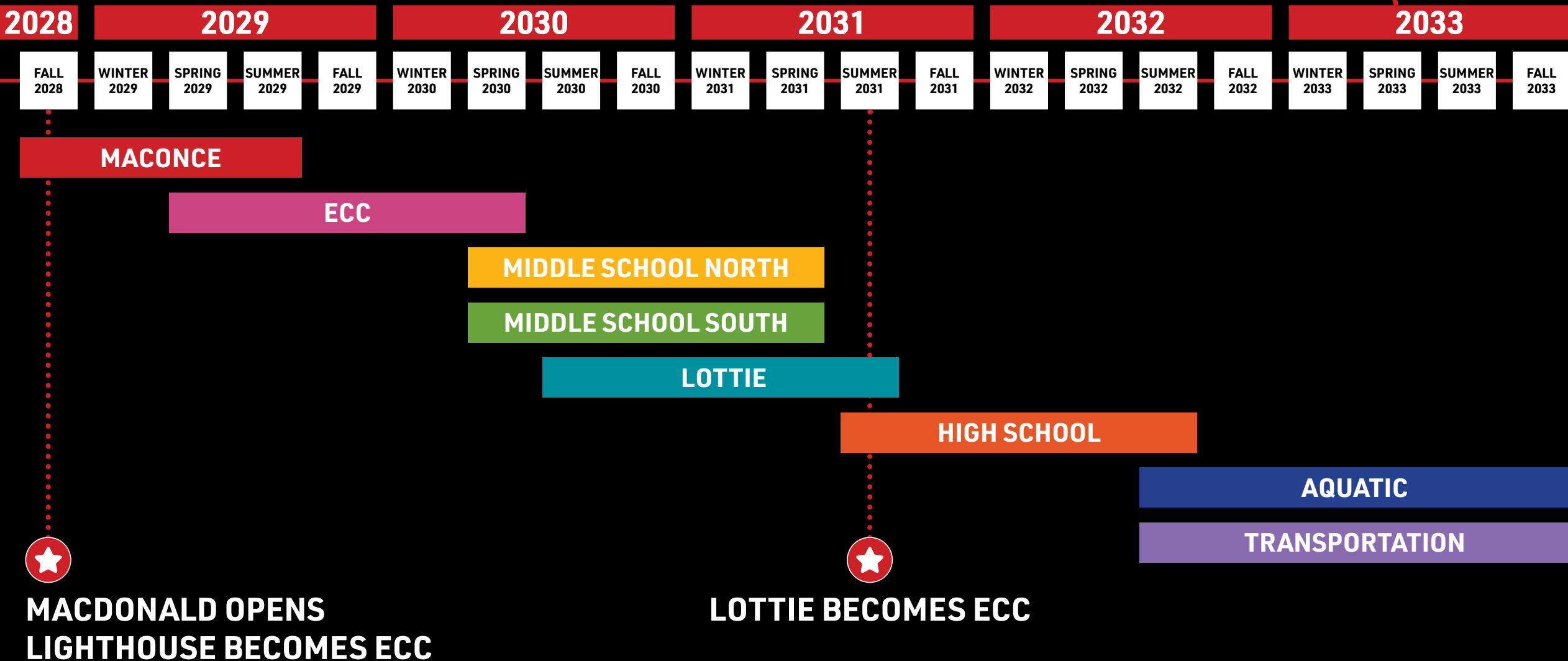
ANCHOR BAY BOND *Schedule*



ANCHOR BAY BOND *Schedule*



ANCHOR BAY BOND *Schedule*



Thank you!



Q+A

Questions after today's forum?
Contact us at **bond@abs.misd.net**