



INSPIRING, CHALLENGING, & EMPOWERING

All Students to Succeed

DID YOU KNOW...

Anchor Bay School District receives the lowest per-pupil foundation allowance in the state.

For the 2018-2019 School Year, Anchor Bay received \$7,871 per student:

⇒ \$1,872 less per student than the highest funded district in Macomb County.

⇒ \$7,925 less per student than the highest funded district in Michigan.

Michigan.gov - 2018-2019 School District Foundation Amounts

Anchor Bay Students Scored Higher Than County and State Averages in Every Area Tested on Spring 2019 Assessments

Anchor Bay Students came in first in the county out of 21 districts in the areas of 3rd, 4th and 5th grade English Language Arts (ELA), 3rd, 4th, and 6th grade Math, and 8th grade Social Studies. Anchor Bay High School 11th grade students ranked in Macomb County's Top 3 in all three areas of the SAT (Social Studies, ELA, and Math).

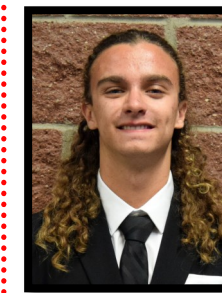
The district is most proud of the growth students are showing. In 2018, Anchor Bay Students were 8th in the county in 8th grade Math and in 2019 they rose to 2nd in the county. The district implemented a new elementary math curriculum three years ago and a new middle school math curriculum two years ago. Anchor Bay identified an area to strengthen and took steps to make tangible progress.

The District placed 6th in the county in 2018 on the SAT and this year the scores show a 2nd place ranking. Our goal is to keep providing a top-notch educational program in which student success in and out of the classroom is the top priority.

ANCHOR BAY HIGH SCHOOL STUDENTS ACHIEVE NATIONAL MERIT RECOGNITION



Deanna Zarycky is the Commended Student in the 2020 National Merit Scholarship Program. This means that Deanna ranked in the Top 50,000 highest scores on the PSAT/NMSQT nationally.



Blake Brdak is the Semifinalist Student in the 2020 National Merit Scholarship Program. Blake ranked in the Top 16,000 highest scores on the PSAT/NMSQT nationally. He will continue on in the scholarship program.

