



Community Forum

BOND PROGRAM UPDATE

MONDAY, MARCH 4, 2024



SECURITY UPDATES

COMPLETED

projects



- ✓ Upgrades access control
- ✓ Staff IDs
- ✓ Door prop alert systems
- ✓ Increased lockdown button access
- ✓ New exterior door locks
- ✓ Risk & vulnerability assessment
- ✓ Dedicated safety team
- ✓ Partnership with local law enforcement

IN PROGRESS & FUTURE

projects



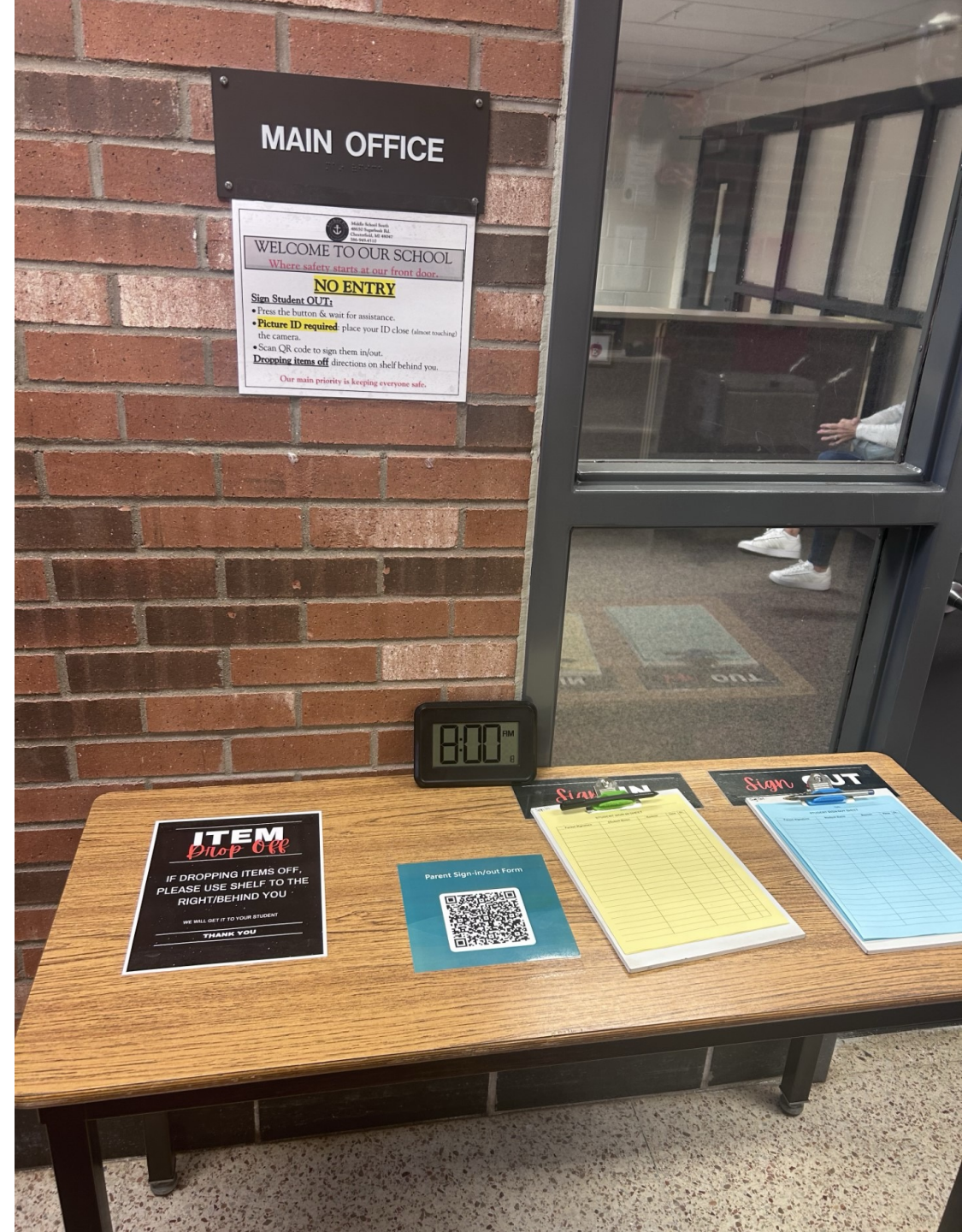
- ✓ **Radios** - *in progress*
- ✓ **Cameras** - *in progress*
- ✓ **Threat assessment procedures** - *in progress*
- ✓ **Active intruder response training** - *in progress*
- ✓ **Emergency reunification procedures**
- ✓ **School emergency / crisis team**
- ✓ **Weapon detection technology**
- ✓ **Bullet resistant window film**

Safety

STARTS AT THE FRONT DOOR


UPGRADES & SECURITY ENHANCEMENTS

Secure vestibule
Visitor management

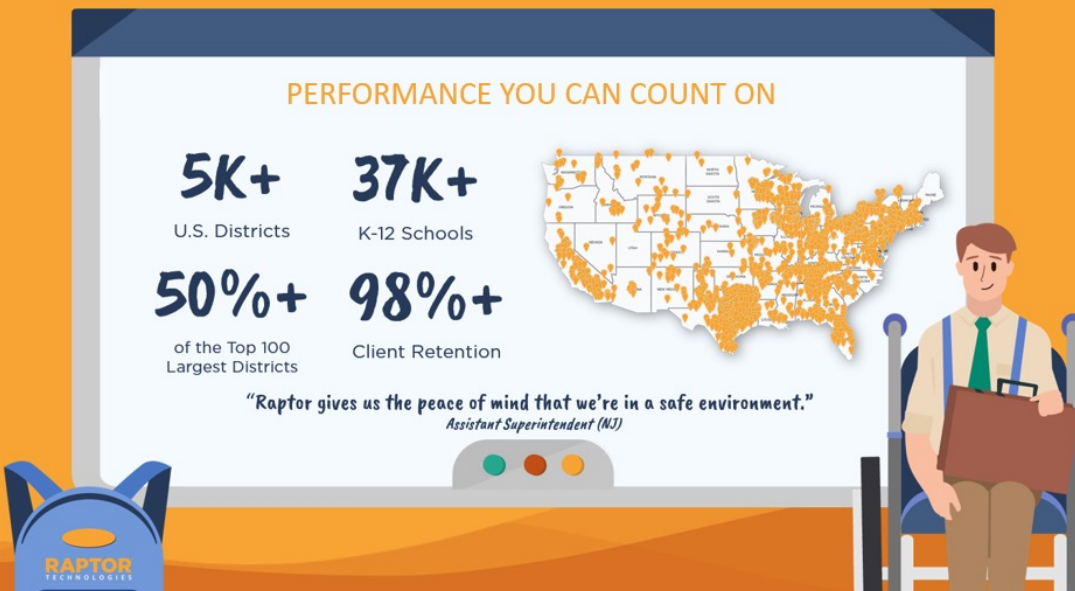


Safety & SECURITY

PERFORMANCE YOU CAN COUNT ON

5K+ U.S. Districts	37K+ K-12 Schools	
50%+ of the Top 100 Largest Districts	98%+ Client Retention	

*"Raptor gives us the peace of mind that we're in a safe environment."
Assistant Superintendent (NJ)*



Raptor Technologies & Anchor Bay School District

Every Child, Every School, Every Day




Solutions to Manage Your Entire School Safety Lifecycle

PREVENT		PREPARE	RESPOND	RECOVER
 VISITOR KNOW WHO IS ON CAMPUS	 VOLUNTEER SCREEN VOLUNTEERS	 STUDENTS SAFE INTERVENE EARLY	 DRILL MANAGER PRACTICE & IMPROVE	 RAPTOR ALERT INITIATE A RESPONSE
		 ACCOUNTABILITY ACCOUNT FOR EVERYONE	 REUNIFICATION REUNIFY FAMILIES	

*"Raptor really is priceless. It has given us freedom, peace of mind and the ability to communicate more accurately with one another. Raptor is part of our everyday operations."
Director of Student Services (IL)*



Solutions to Manage Your Entire School Safety Lifecycle



"Raptor really is priceless. It has given us freedom, peace of mind and the ability to communicate more accurately with one another. Raptor is part of our everyday operations."

Director of Student Services (IL)

DAILY & EMERGENCY OPERATIONS SOLUTION



DISMISSAL MANAGEMENT

- Reduce time spent on dismissal
- Eliminate front office calls
- Make instant dismissal changes
- Ensure student safety every day
- Communicate in real time
- Increase instructional time



EMERGENCY ALERT SYSTEM

- Equip staff with a silent panic button
- Account for every student's safety
- Send staff customized protocols
- Signal emergency responders quickly
- Utilize a system everyone uses daily
- Communicate in real time with staff & parents



EMERGENCY REUNIFICATION TOOL

- Initiate reunification on any device
- Easily communicate with staff & parents
- Check in guardians securely
- Mark students dismissed when reunited
- Use a process familiar with everyone
- Eliminate inefficient paper reunification



DIGITAL HALL PASSES

- Create timestamped digital hall passes
- Give hall monitors a real-time view
- Account for students during emergencies
- Limit passes to mitigate student behavior
- Access reports to make informed decisions
- Gain insights to serve students better



PROGRAMMING UPDATES

NEW CAREER PATHWAY TRACKS

A new day in the Bay!



**ENGINEERING,
MANUFACTURING,
NATURAL SCIENCE
& AGRICULTURE**



**HEALTH & HUMAN
SERVICES**



**ARTS &
COMMUNICATION**



**BUSINESS &
TECHNOLOGY**



CONSTRUCTION UPDATES

COMPLETED PROJECTS • DISTRICT WIDE ACCESS CONTROLS



More than 75 card readers installed



More than 300 Door Contacts Installed

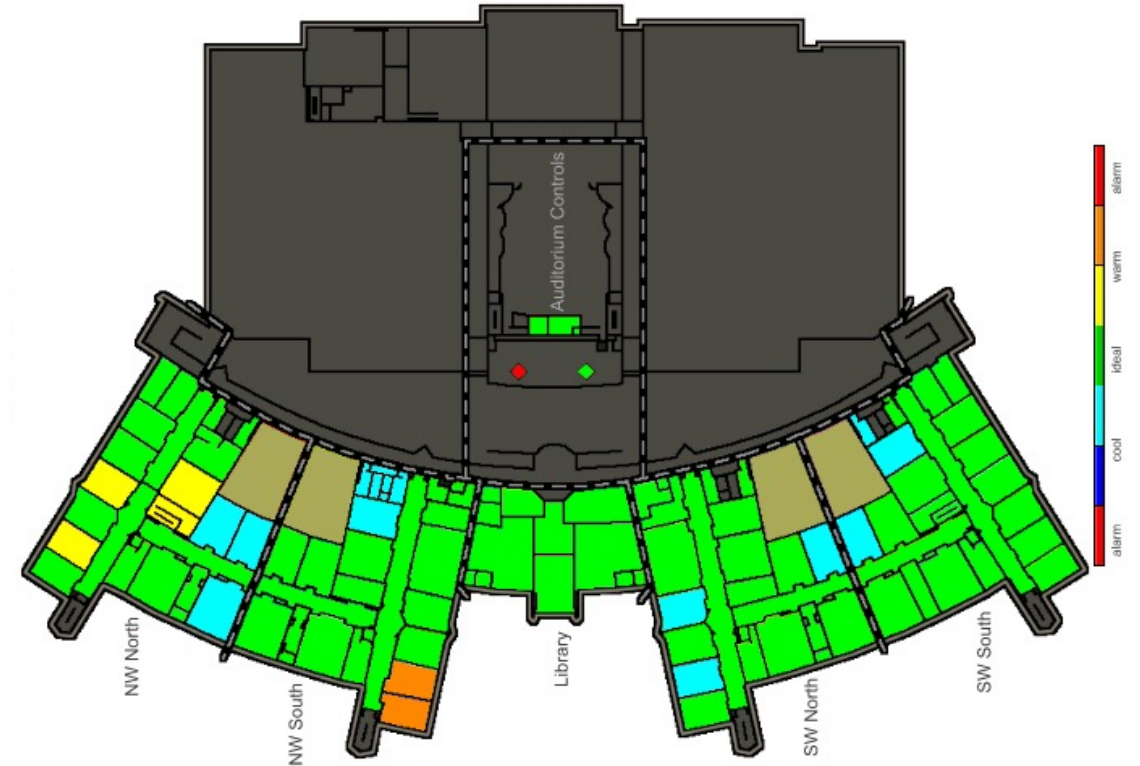
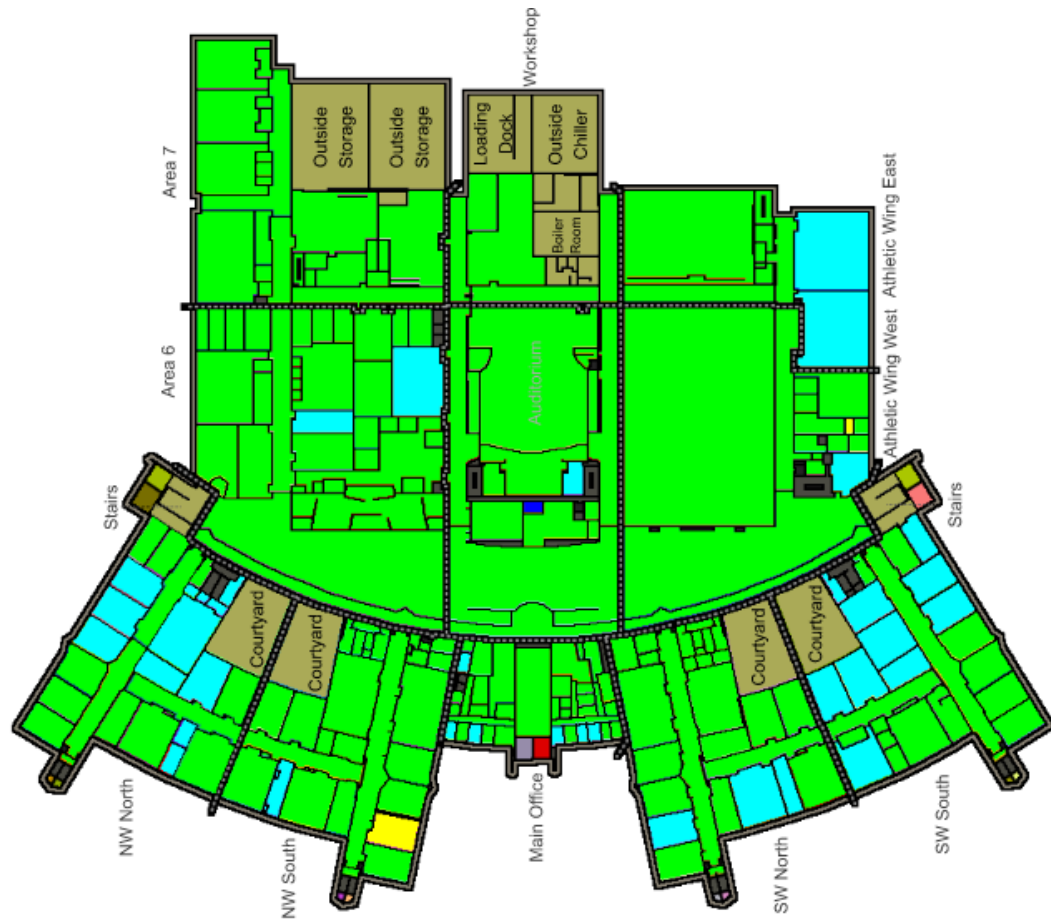


Exterior Door Key Replacement



All 14 Buildings in District

COMPLETED PROJECTS • HS TEMPERATURE CONTROLS



MORE THAN 250 PIECES OF EQUIPMENT HAVE BEEN ADDED TO BMS SYSTEM

COMPLETED PROJECTS • HS GYM FLOOR & SCORE BOARDS



COMPLETED PROJECTS • STORAGE FACILITY

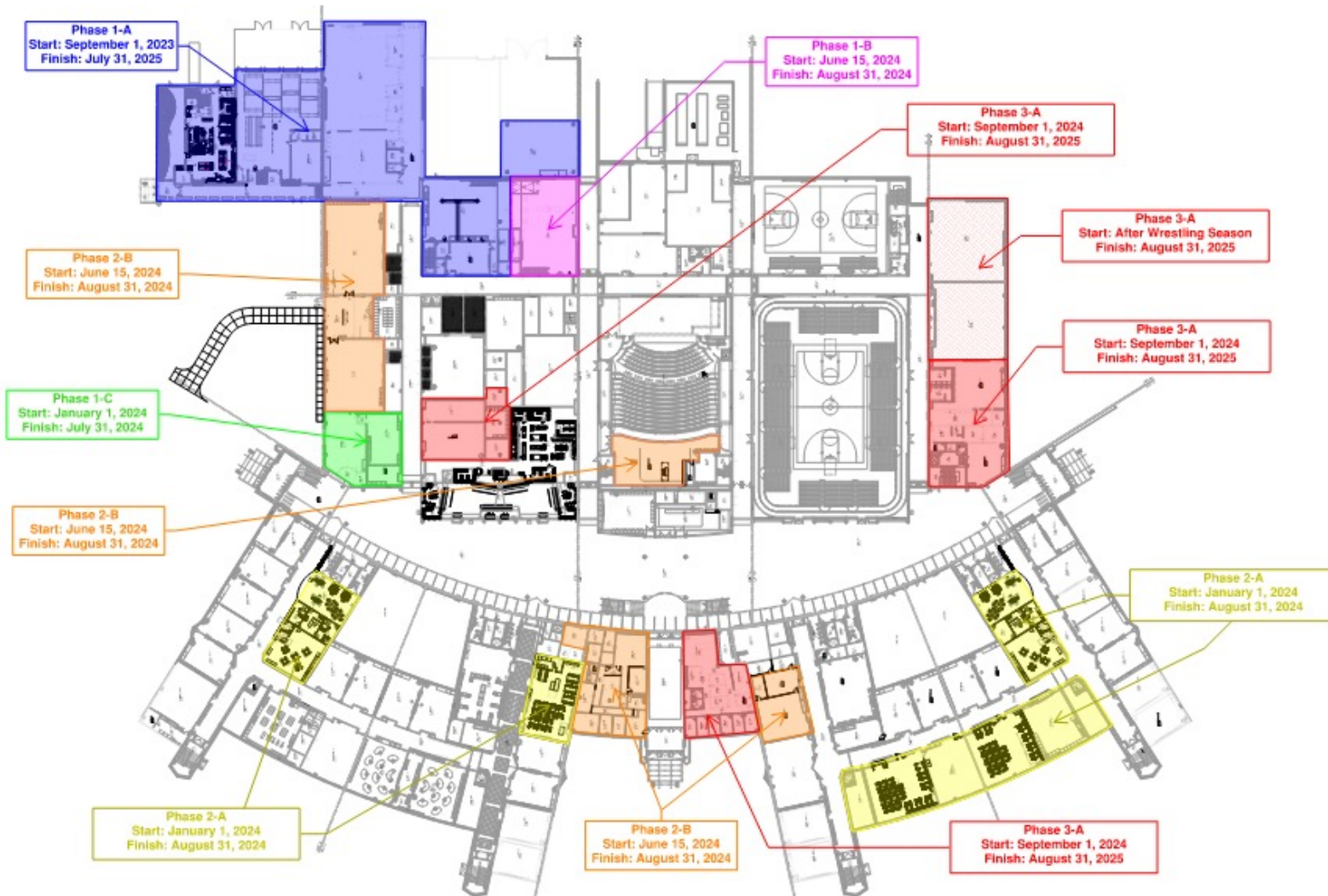


COMPLETED PROJECTS • TRANSPORTATION FENCING



CURRENT PROJECTS • HS ADDITIONS & RENOVATIONS

PHASE
1



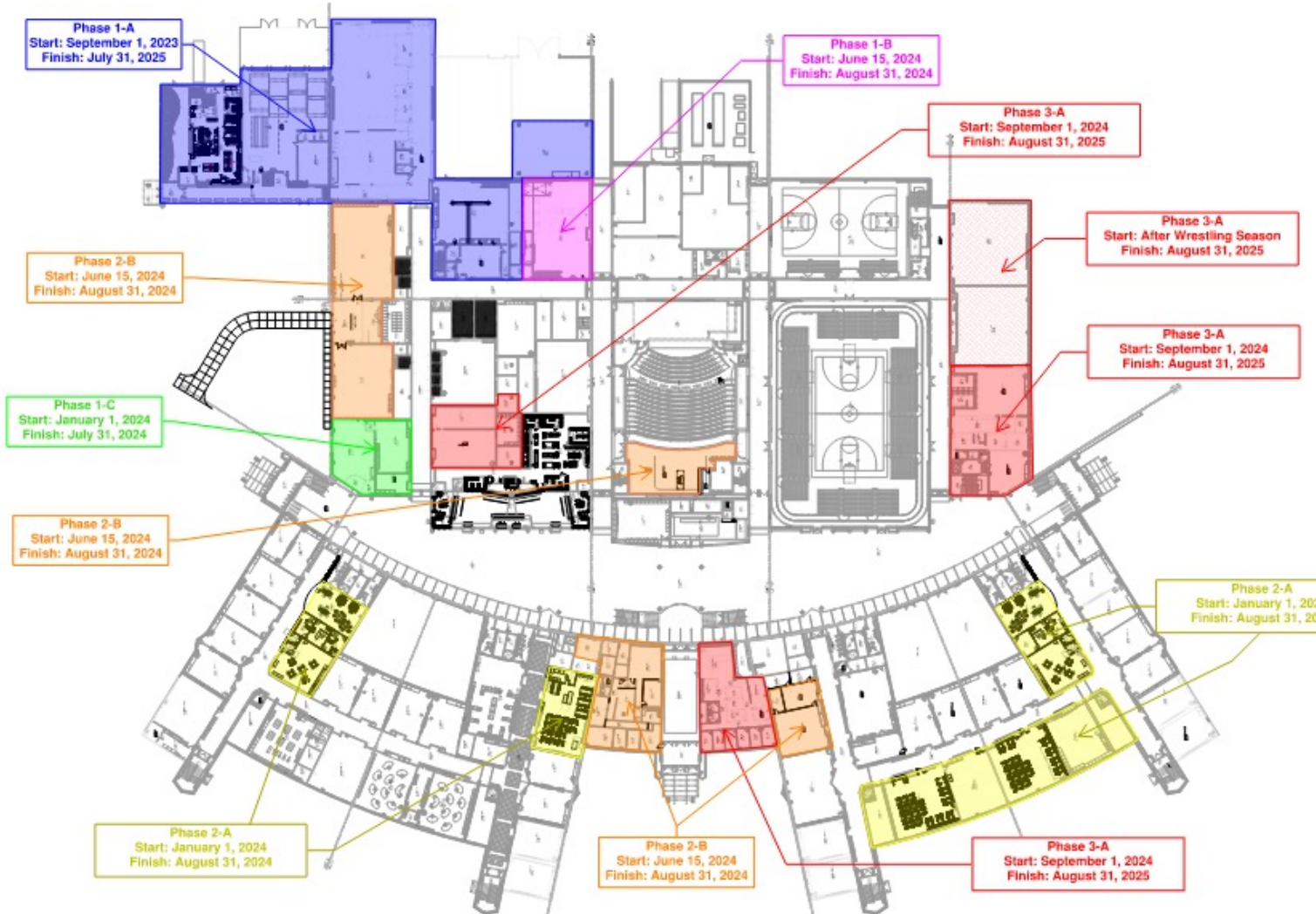
12,000 SF ADDITION
Kitchen/Restaurant
Auto Shop
Covered Yard



INTERIOR RENOVATIONS
Robotics
Welding
Engineering
Chiller Replacement
Fire Alarm Upgrades

CURRENT PROJECTS • HS ADDITIONS & RENOVATIONS

PHASE
2



CTE PATHWAY OFFICES



HEALTH & HUMAN SERVICES
Medical Classrooms



GRAPHIC ARTS



LAW / MOCK COURTROOM



BROADCASTING

**Barton
Malow**

CURRENT PROJECTS • HS ADDITIONS & RENOVATIONS

PHASE
1

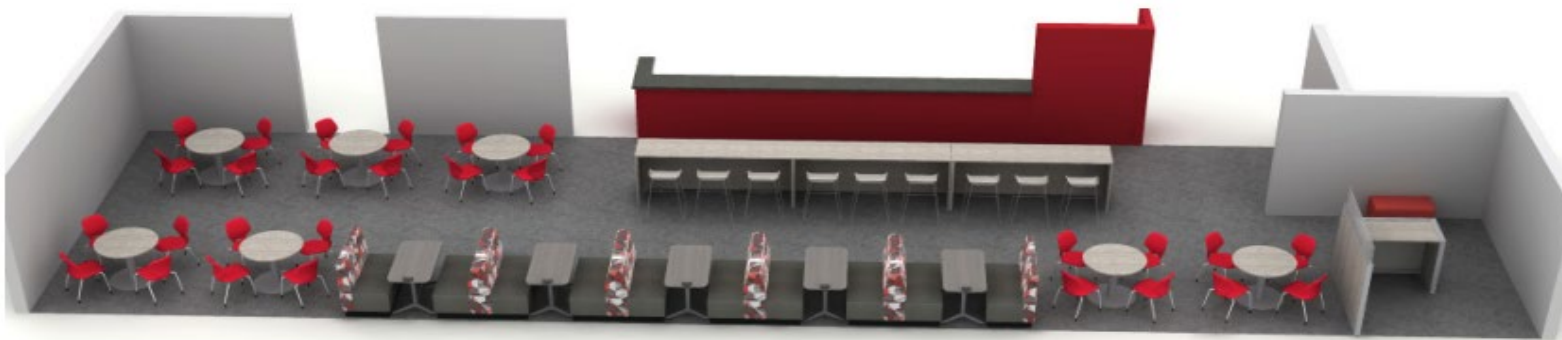


12,000 SF ADDITION
Kitchen/Restaurant
Auto Shop
Covered Yard



INTERIOR RENOVATIONS

Robotics
Welding
Engineering
Chiller Replacement
Fire Alarm Upgrades



CURRENT PROJECTS • HS ADDITIONS & RENOVATIONS

PHASE
2



COURTROOM - MODE A



COURTROOM - MODE B



CTE PATHWAY OFFICES



HEALTH & HUMAN SERVICES
Medical Classrooms



GRAPHIC ARTS



LAW / MOCK COURTROOM

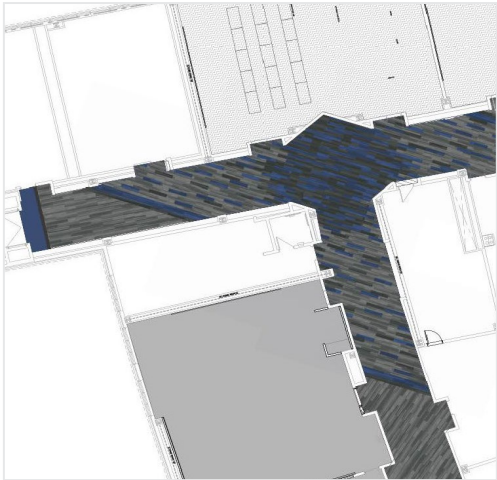


BROADCASTING

**Barton
Malow**

CURRENT PROJECTS • HS ADDITIONS & RENOVATIONS

PHASE
2



CTE PATHWAY OFFICES



HEALTH & HUMAN SERVICES
Medical Classrooms



GRAPHIC ARTS



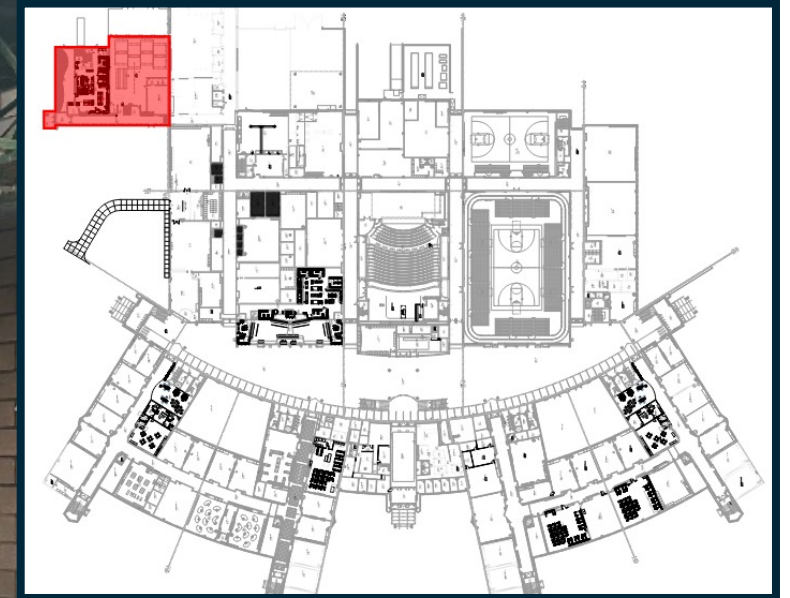
LAW / MOCK COURTROOM



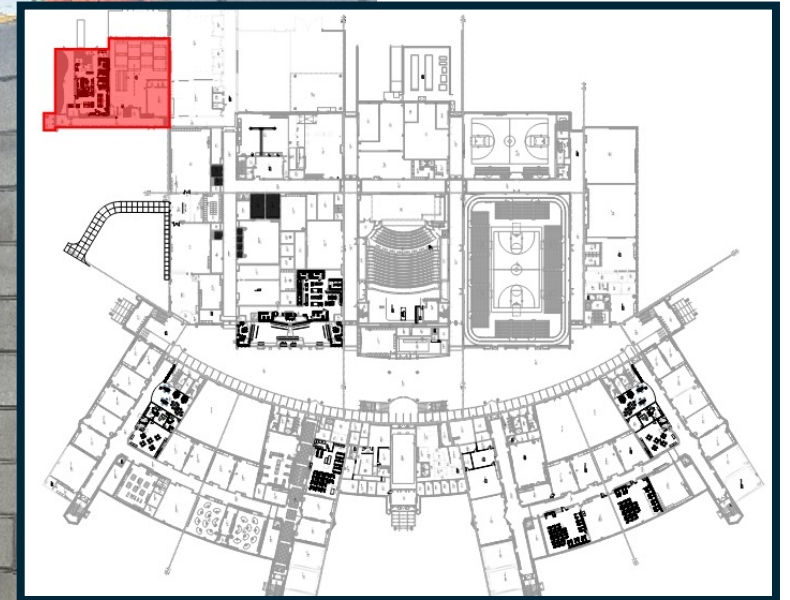
BROADCASTING

**Barton
Malow**

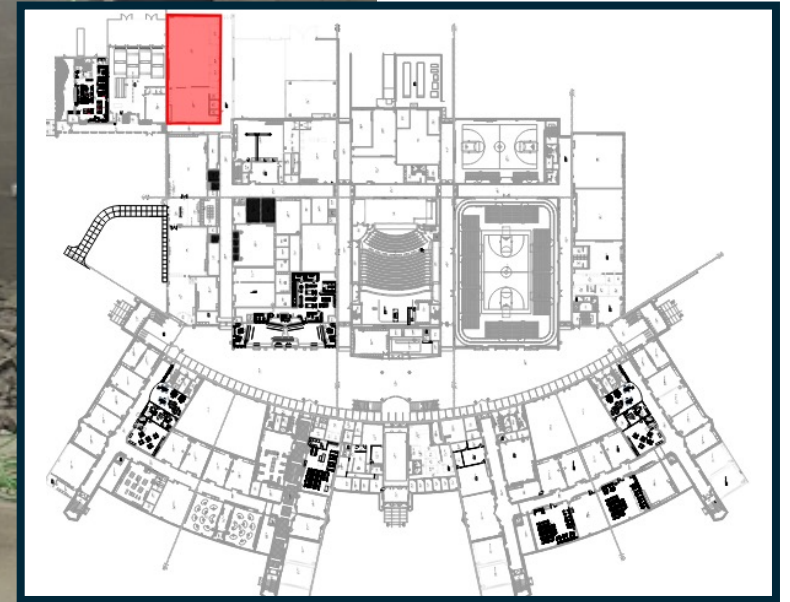
CURRENT PROJECTS • HIGH SCHOOL ADDITION



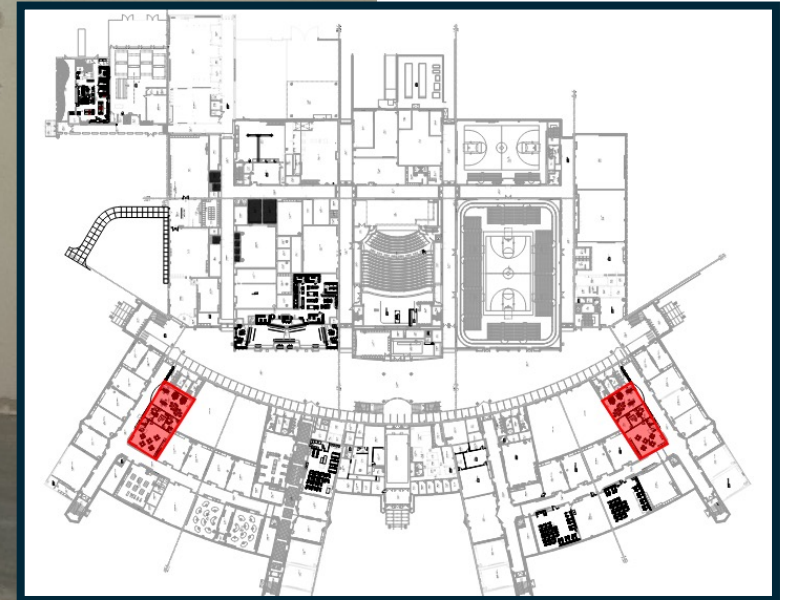
CURRENT PROJECTS • HIGH SCHOOL ADDITION



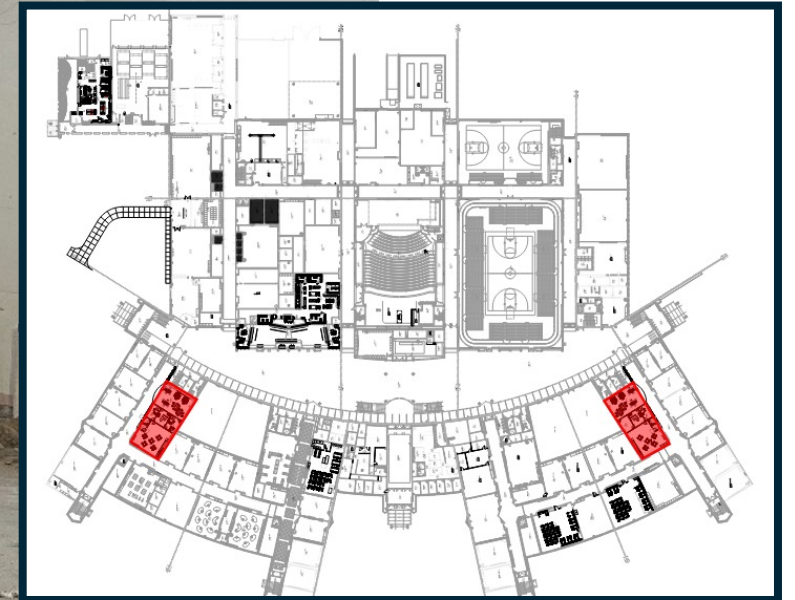
CURRENT PROJECTS • ROBOTICS



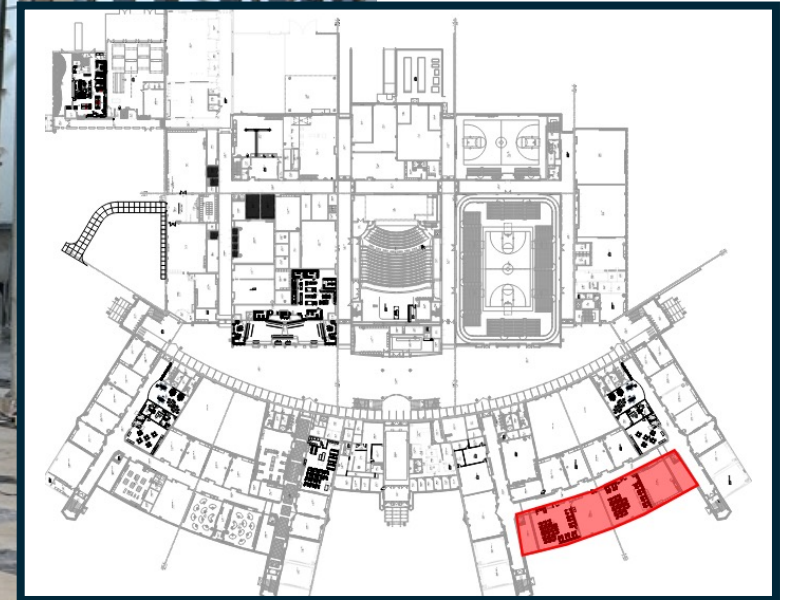
CURRENT PROJECTS • CAREER PATHWAY OFFICE



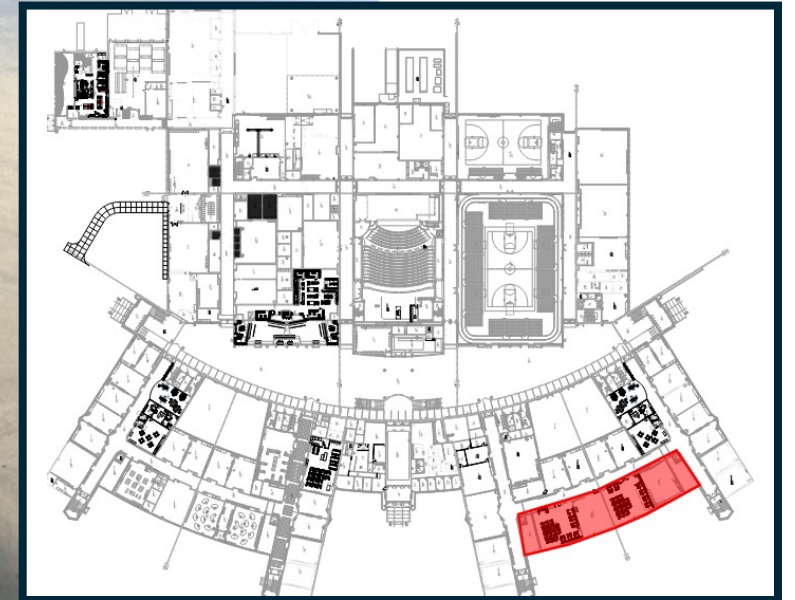
CURRENT PROJECTS • CAREER PATHWAY OFFICE



CURRENT PROJECTS • MEDICAL CLASSROOM RENOVATIONS



CURRENT PROJECTS • MEDICAL CLASSROOM RENOVATIONS

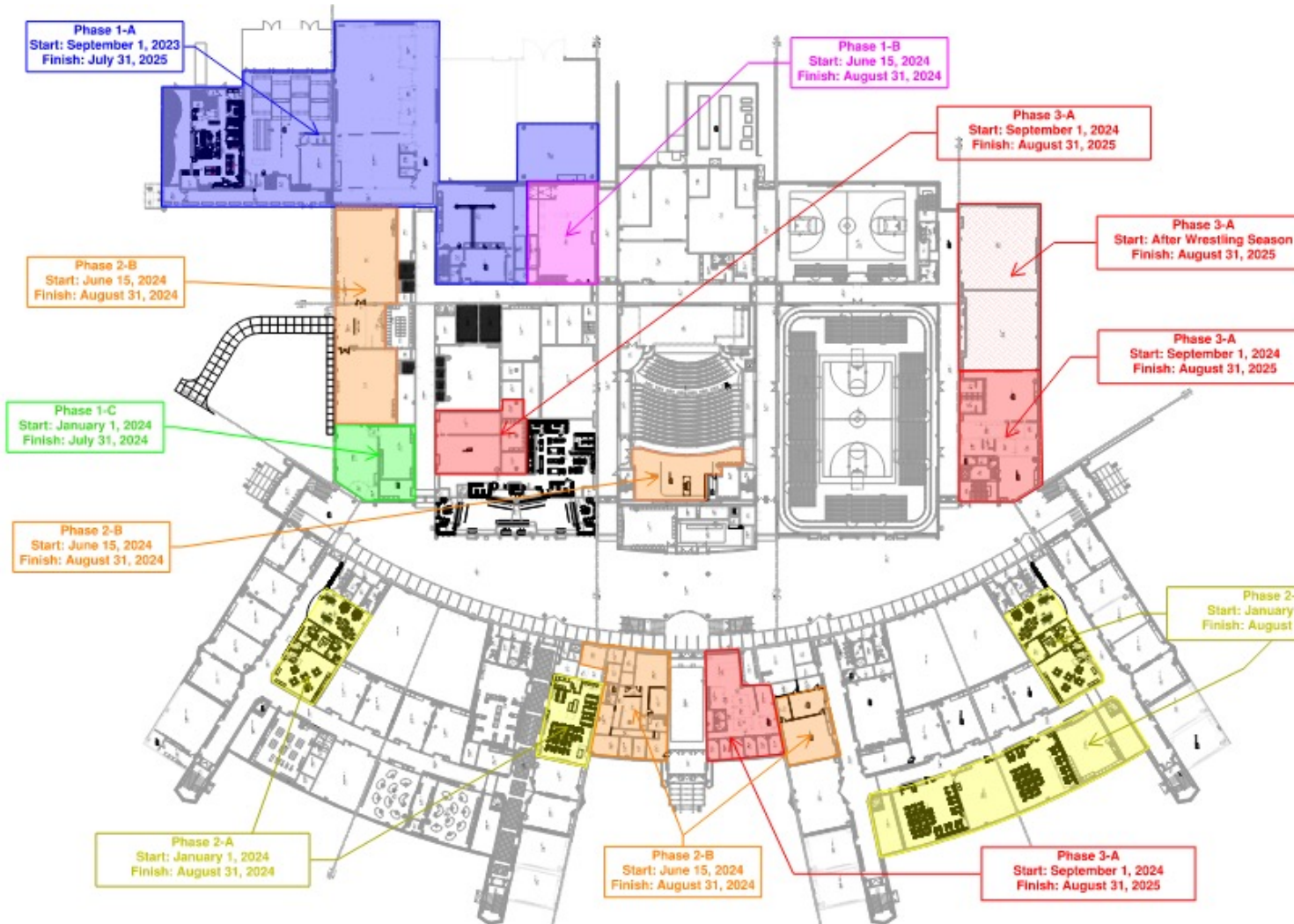


CONSTRUCTION TRADES CLASS • HANDS ON EXPERIENCE



THE NEXT PHASE • HS ADDITIONS & RENOVATIONS

PHASE
3



ATHLETIC WING RENOS
Wrestling Room, Weight Room & Fitness Studio



MEDIA CENTER RENOS



STUDENT SUCCESS CENTER



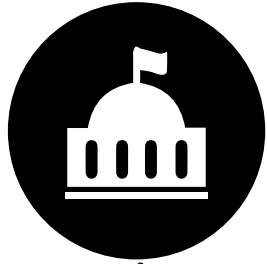
AUX GYM FLOODING SOLUTIONS

**Barton
Malow**



BOND PROGRAM UPDATES

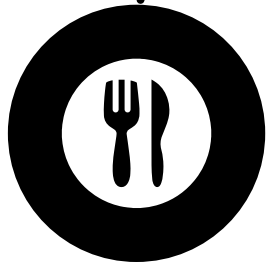
WHAT'S CHANGED SINCE THE BOND PASSED?



Early childhood legislation



Increased enrollment



Universal free & reduced lunch

forecasted

UTILIZATION

[ENROLLMENT VS. CAPACITY]

PRE-K 203%

ELEMENTARY 98%

MIDDLE SCHOOL 58%

TOTAL 90%

STILL ACHIEVING OUR

Goals

EDUCATIONAL GOALS

- ✓ Facilitate *One Anchor Bay* culture
- ✓ Increase educational opportunities
- ✓ Maintain small school atmosphere
- ✓ Provide for project-based learning
- ✓ Create spaces for all learners
- ✓ Enhance design process curriculum
- ✓ Equitable classroom square footage
- ✓ Enhance student support resources

OPERATIONAL GOALS

- ✓ Utilize key existing investments
- ✓ Correct geographical concerns
- ✓ Balance student population
- ✓ Lower operational costs
- ✓ Reduce average age of *K-12 facilities*
- ✓ Reduce *K-12 square footage*

A new day in the Bay

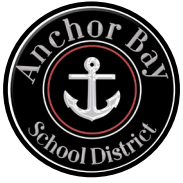
*we are
listening*

**BASED ON
COMMUNITY
INPUT**

No "mega" elementary
schools

Equitable educational
programs for our
middle schools

Reevaluating
Lottie M. Schmidt



HOW DO WE BEST UTILIZE OUR EXISTING SQUARE FOOTAGE TO ACHIEVE A ROBUST EARLY CHILDHOOD PROGRAM?

3 MAJOR QUESTIONS FOR DECISION MAKING

1

ADJUST GRADE LEVEL CONFIGURATION?

2

OPEN MACDONALD ELEMENTARY?

3

ASHLEY OR LIGHTHOUSE AS ELEMENTARY?

CHANGE GRADE LEVEL CONFIGURATION

why REASONS TO CONSIDER

Middle School North & South underutilized

Better utilize available capacity


Middle schools **58% utilized (enrollment vs. capacity)**

Elementary schools are near capacity

Leverage bond dollars for universal pre-k space

Balance utilization across elementary & middle schools

- 
- ✓ Facilitate One Anchor Bay culture sooner
 - ✓ Consistent & enhanced programming
 - ✓ Closes 5/6 student achievement gap
 - ✓ Additional athletic / extra curricular opportunities
 - ✓ Equalizes MS experiences & opportunities for students
 - ✓ Improves transportation & eliminates shuttling
 - ✓ Balances space utilization
 - ✓ Eliminates need for "mega" elementary school

- 
- ✗ Additional transition
 - ✗ Length of travel for some
 - ✗ Impact on siblings

LET'S BREAK FOR A 10-MINUTE

brainstorm

ADJUST GRADE LEVEL CONFIGURATION?



OPEN MACDONALD ELEMENTARY SCHOOL

why REASONS TO CONSIDER

Unused square footage

Better utilize available classroom space

Current elementary schools are near capacity

Maintain smaller class sizes

Future enrollment projections

Regional development & expansion (26 Mile)



- ✓ Balances space utilization
- ✓ Eliminates need for "mega" elementary school
- ✓ Anticipated area of growth
- ✓ MacDonald is one of the newer district facilities



- ✗ Location to current student population
- ✗ Administration relocation

LET'S BREAK FOR A 10-MINUTE

brainstorm

OPEN MACDONALD ELEMENTARY SCHOOL?



vs.



ASHLEY OR LIGHTHOUSE AS ELEMENTARY

why REASONS TO CONSIDER

Centrally located facilities

Two elementary schools on one campus

Lighthouse is the district's largest elementary school

Lighthouse is the district's oldest elementary school

ASHLEY AS ELEMENTARY

- ✓ 2017 bond improvements
- ✓ More flexible site (playgrounds, athletic fields)
- ✓ Better traffic flow & parking
- ✓ Lower renovation cost



LIGHTHOUSE AS ELEMENTARY

- ✓ Utilize existing square footage
- ✓ Could be more cost effective (depending on solution)



LET'S BREAK FOR A 10-MINUTE

brainstorm

ASHLEY OR LIGHTHOUSE AS ELEMENTARY?

pros vs. *pros*



HOW DO WE BEST UTILIZE OUR EXISTING SQUARE FOOTAGE TO ACHIEVE A ROBUST EARLY CHILDHOOD PROGRAM?

ADJUST GRADE LEVEL CONFIGURATION?

yes

no

OPEN MACDONALD ELEMENTARY?

OPEN MACDONALD ELEMENTARY?

yes

no

yes

no

ASHLEY OR LIGHTHOUSE?

ASHLEY OR LIGHTHOUSE?

ASHLEY OR LIGHTHOUSE?

ASHLEY OR LIGHTHOUSE?

PRE-K
Lighthouse
Lottie

PRE-K
Ashley
Lottie

PRE-K
Lighthouse
Lottie

PRE-K
Ashley
Lottie

PRE-K
Lighthouse
Lottie

PRE-K
Ashley
Lottie

PRE-K
Lighthouse
Lottie

PRE-K
Ashley
Lottie

K-4
Ashley
Great Oaks
Maconce
Naldrett
MacDonald

K-4
Lighthouse
Great Oaks
Maconce
Naldrett
MacDonald

K-4
Ashley
Great Oaks
Maconce
Naldrett

K-4
Lighthouse
Great Oaks
Maconce
Naldrett

K-5
Ashley
Great Oaks
Maconce
Naldrett
MacDonald

K-5
Lighthouse
Great Oaks
Maconce
Naldrett
MacDonald

K-5
Ashley
Great Oaks
Maconce
Naldrett

K-5
Lighthouse
Great Oaks
Maconce
Naldrett

5-6
M.S. North

5-6
M.S. North

5-6
M.S. North

5-6
M.S. North

6-8
M.S. North
M.S. South

6-8
M.S. North
M.S. South

6-8
M.S. North
M.S. South

6-8
M.S. North
M.S. South

7-8
M.S. South

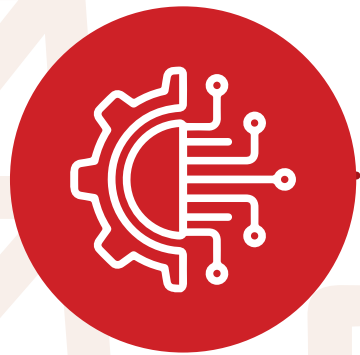
7-8
M.S. South

7-8
M.S. South

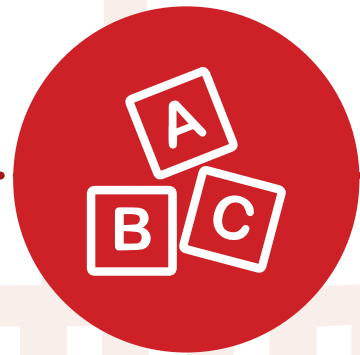
7-8
M.S. South

WHAT COULD WE DO WITH
\$5-20M IN ADDITIONAL FACILITY

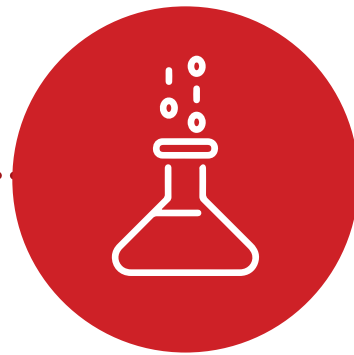
enhancements



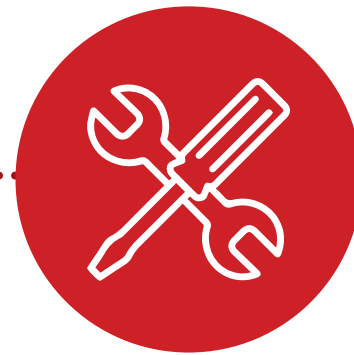
Additional
M.S. CTE
enhancements



Further
elementary
programming
enhancements



Create
new science
labs



More
infrastructure
improvements



Additional
programming
improvements
at Great Oaks
& Maconce

STILL ACHIEVING OUR

Goals

EDUCATIONAL GOALS

- ✓ Facilitate *One Anchor Bay* culture
- ✓ Increase educational opportunities
- ✓ Maintain small school atmosphere
- ✓ Provide for project-based learning
- ✓ Create spaces for all learners
- ✓ Enhance design process curriculum
- ✓ Equitable classroom square footage
- ✓ Enhance student support resources

OPERATIONAL GOALS

- ✓ Utilize key existing investments
- ✓ Correct geographical concerns
- ✓ Balance student population
- ✓ Lower operational costs
- ✓ Reduce average age of *K-12 facilities*
- ✓ Reduce *K-12 square footage*

A new day in the Bay



CHINALINK PROGRAM



CHINALINK.....

Program

Considering allowing up to 35 students attend annually

- ✓ No district-provided housing, special programming, etc.
- ✓ District to sponsor visas & transportation to/from airport
- ✓ District currently accepts 22 exchange students
- ✓ Revenue to supplement summer, after-school programming & classroom supply accounts
- ✓ Offset short-term population dip at the high school
- ✓ Proposed agreement would be for 3 years

Thank you!



Q+A

Questions after today's forum?
Contact us at **bond@abs.misd.net**